



# *Media Kit*

STATE PRIMARY ELECTION  
JUNE 3, 2008

ACTING REGISTRAR-RECORDER/COUNTY CLERK DEAN C. LOGAN  
12400 IMPERIAL HIGHWAY - NORWALK, CA 90650  
[www.lavote.net](http://www.lavote.net)





COUNTY OF LOS ANGELES  
**REGISTRAR-RECORDER/COUNTY CLERK**

12400 IMPERIAL HWY. – P.O. BOX 1024, NORWALK, CALIFORNIA 90651-1024 - [www.lavote.net](http://www.lavote.net)

**DEAN C. LOGAN**

Acting Registrar-Recorder/County Clerk

May 27, 2008

Dear Members of the Media, Election Observers and Other Interested Individuals:

**2008 STATEWIDE DIRECT PRIMARY ELECTION MEDIA KIT**

I am pleased to provide you with the June 3, 2008 “Statewide Direct Primary Election Media Kit”. This kit contains most of what you need to know about the upcoming Primary including: candidate information, voter turnout and registration totals, historical statistics, vote by mail trends and comparisons. The information is presented in a user friendly style for easy access and clear reporting. For your convenience we have also posted the entire Kit on our web site at [www.lavote.net](http://www.lavote.net).

Los Angeles County is the largest county elections jurisdiction in the United States. We have more than 4 million registered voters, 4,383 polling places and we recruit, train and place more than 25,000 pollworkers in each major election.

We have some exciting information to share regarding services provided for this election:

- **InkaVote Plus Provides Voter Protection and Accessibility:** We are proud to continue our history of providing transparent and efficient elections to the voters of Los Angeles County. Our state-certified InkaVote Plus voting equipment not only provides a paper-audit trail, it also allows voters the chance to double check their ballot and those with specific needs to cast ballots independently without pollworker assistance.

The Precinct Ballot Reader (PBR) alerts a voter that she/he has “over voted” or when the ballot appears to be blank. An over vote is when a voter votes for more than the allowable number of candidates in a contest. A “blank ballot” is when a voter has not made any marks on a ballot. After the ballot kicks back, the voter is provided the opportunity to correct the ballot before it is secured in the ballot box.

The Audio Ballot Booth (ABB) is a voting assistance device equipped with headphones that allow voters with disabilities to move through the ballot by listening to instructions and voting by pressing a series of buttons on a key pad.

- **Vote By Mail Program Follows National Trend:** Jurisdictions all over the country are seeing their vote by mail programs expand and Los Angeles County is no exception.
- **Web Site Changes Make Information Easy to Access:** We have new features on our web site at [www.lavote.com](http://www.lavote.com) that make it easier to find your polling place, learn how to register to vote or track your vote by mail ballot.

One recent upgrade allows voters to track their vote by mail ballot applications and confirms when the voted ballot has been received by our office. This way, voters can be sure we received their application, that their ballot is mailed and that the voted ballot was returned and is ready to be counted after the polls close on Election Day.

Another feature helps registered voters identify their polling place. Voters can log onto our web site and click on the Polling Place Lookup icon at the top of the page. When they get to the program they enter their street number and street name and the system provides the name and address of their polling location. Voters may also download their sample ballot from this section of the website.

An instructional video is also available on our web site. Anyone can log into the site and watch an instructional video on Los Angeles County's InkaVote Plus voting system. The video shows the voter how to vote and how each piece of equipment operates.

- **New Operations Center Streamlines Operations:** Last August our voting equipment and supplies section moved into our new Operations Center in Santa Fe Springs. The new facility is a 100,000 square foot Operations Center and is more than twice the space of our former facility. The new facility boasts a state-of-the-art security system, a computerized equipment tracking and scanning system and adequate room for all of our election equipment.

I hope this information is useful to you. Please call us at (562) 462-2716 if you have any questions or if we can provide any further information. Remember – we're here to help.

Sincerely,

DEAN C. LOGAN  
Acting Registrar-Recorder/County Clerk

# TABLE OF CONTENTS

|  | <u>PAGE</u> |
|--|-------------|
| <b>Important Phone Numbers</b> .....                                   | 1           |
| <b>Key Services</b>  |             |
| • InkaVote Plus .....  | 3           |
| • Facts About InkaVote Plus .....                                      | 4           |
| • Absentee Voting Now Called Vote By Mail .....                        | 4           |
| • Modified Closed Primary .....  | 4           |
| • Revised Nonpartisan Ballot .....                                     | 5           |
| • Voting Options .....   | 6           |
| • InkaVote Plus Video and Information Available On Website .....       | 6           |
| • Sample Ballot Viewing Choices .....                                  | 6           |
| • Streamlined Website .....  | 6           |
| • Deputy Registrar Training Program .....                              | 7           |
| • Neighborhood Voting Centers (NVCs).....                              | 7           |
| • “Ballot Express” Will Call Service For Absentee Ballot Pick-up ..... | 7           |
| • Campaign Financial Disclosure Statements .....                       | 8           |
| • Multilingual Voter Services .....                                    | 8           |
| • Poll Location Available by Automated Phone.....                      | 8           |
| • Voters With Disabilities.....  | 9           |
| • Pollworker Recruiting and Training Enhancements .....                | 9           |
| <b>About Our Department and Programs</b>                               |             |
| • General Information.....   | 10          |
| • A Statistical Overview 2004 - Primary.....                           | 10          |
| • Vote By Mail Information (How To, Trends, Counting).. ..             | 11          |
| • Departmental Organization Charts .....                               | 12          |
| • Democracy In Action Programs.....                                    | 14          |
| • Check Out Our Website!.....  | 18          |
| <b>Election Statistics</b>   |             |
| • A Statistical Overview.....  | 19          |
| • Voter Registration Statistics.....                                   | 19          |
| • Historical Voter Registration and Voter Turnout Information.....     | 20          |
| • Historical Vote By Mail Voter Requests.....                          | 21          |
| • Historical Vote By Mail Ballots Cast Information.....                | 22          |
| • Vote By Mail Ballot Counting - Times When Counted.....               | 23          |
| • Speed of Ballot Counting Election Night – Historical Trends.....     | 23          |
| • Provisional Ballots.....   | 24          |
| • Election Costs.....  | 24          |
| <b>Preparing For The Election</b>                                      |             |
| • Precinct Officers and Polling Places.....                            | 25          |
| • Sample Ballot Booklet.....   | 26          |
| • New Citizen Voting Procedures.....                                   | 26          |

## **What's On The Ballot?**

- Qualifications and Terms of Office..... 27
- Votes Required to Elect Candidates..... 28
- Summary of Measures, Candidates and Offices on the Ballot.....29
- Summary of Partisan Candidates on Ballot..... 30
- Candidates, Voting Precincts, and Registration  
By Partisan Office.....30
- Placement and Rotation of Candidates' Names on Ballot..... 33
- Measures Appearing on Ballot.....35

## **Election Day/Night**

- Speed of Ballot Counting Election Night – Historical Trends.....38
- Vote by Mail Ballot Counting – Times When Counted ..... 38
- How do the Ballots Get to Norwalk? ..... 39
- Voting and Ballot Processing Flow Chart ..... 40
- Incomplete Ballot Counting Election Night..... 41
- How to Read Election Results Bulletin ..... 43

## **Wrapping Up The Election/Canvass**

- What is the Vote Canvass? ..... 44
- Canvass Schedule..... 45
- Requesting a Recount ..... 46

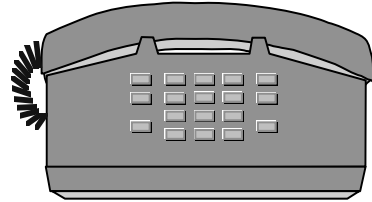
## **Most Commonly Asked Questions**

- What is a Provisional Ballot and Why Do They  
Take so Long to Process After Each Election?..... 50
- Why are the Phones so Busy at the Registrar's  
Office on Election Day? ..... 50
- Why Has My Voting Location Changed? ..... 51
- Are There Any Safeguards in the Vote Tally System  
to Guard Against Fraud? ..... 51
- What Provisions are Made for Voters with Disabilities?..... 51
- What Provisions are Made for Multilingual Voters? ..... 52
- What is InkaVote Plus? ..... 53
- Common Questions About Vote by Mail Ballots, Registration  
and Voting ..... 55

## **Future Elections**

- 2008 Scheduled Elections ..... 63

## IMPORTANT PHONE NUMBERS



You may obtain information about specific election services by calling the following telephone numbers.

### **Hourly Voter Turnout Information**

Projected turnout reports (based on phone calls to sample precincts) will be issued each hour on the half-hour from 8:30 a.m. to 8:30 p.m. on election day.

**(562) 462-2726 or  
(562) 462-2648**  
(for media use)

### **Semi-Official Election Results**

Preliminary Vote by Mail voting results will be available at approximately 8:30 p.m. election night. As ballots arrive from the precincts and are tabulated, results will be available approximately every 20 minutes until all 4,383 voting precincts have reported (also, see section on expected speed of ballot counting). \*\*\* *Election results will also be continuously updated and displayed on the Internet election night at <http://www.lavote.net>.*

**(562) 466-1323**

### **Election Results Information on Wednesday, June 4<sup>th</sup>**

From 8:00 a.m. to 5:00 p.m.

**(562) 466-1310**

### **Voter Registration/Sample Ballot Inquiries**

To verify registration status or inquire about a sample ballot.

**(562) 466-1310 or  
(562) 466-1323**

### **Vote-by-Mail Ballot Inquiries**

**(562) 466-1323**

### **Election Information**

General information on election, registration and voter services.

**(562) 466-1310**

### **Sample Ballot Translation**

To receive a Sample Ballot booklet translated into Chinese, Japanese, Korean, Spanish, Tagalog/Filipino or Vietnamese.

**(800) 481-8683**

### **TDD (Telephone Device for the Deaf) Precinct Officers (Poll Worker)**

To become a precinct officer

**(562) 462-2259  
(800) 815-2666**  
Option #7

**Polls**

To offer a facility as a polling place or report problems at a polling place on Election Day.

**(800) 815-2666**  
Option #7

**Registering to Vote**

To register to vote during regular office hours of 8 a.m. to 5 p.m. After hours, call (562) 462-2260 to leave a recorded message to request a voter registration form be mailed. (Note: The registration deadline for the June 3, 2008 Statewide Direct Primary Election was May 19, 2008.)

**(562) 466-1310**

**Candidate Nomination Procedures**

Information regarding election dates, offices to be filled, qualifications for office, nomination filing dates and procedures.

**(562) 462-2317**

**Campaign Financial Disclosure**

Campaign financial statement filing requirements for candidates, committees and office holders.

**(562) 462-2339**

**Voter Fraud Hot Line**

To report factual information on illegal voter registration and/or voting activities.

**(800) 815-2666**  
Option #6

## KEY SERVICES

### INKAVOTE PLUS IS HERE TO PROTECT YOUR VOTE!

The *InkaVote Plus* voting equipment is an enhancement to the InkaVote optical scan paper-based voting system used in Los Angeles County since November 2003. Introduced in 2006, the *Plus* includes two key features at every voting location: a ballot reader and an audio ballot booth.

After voting the InkaVote ballot using the ink marker provided, each voter inserts his/her ballot into the InkaVote Plus reader. The reader checks the ballot for inadvertent errors. The reader alerts any voter who makes more selections in a contest than allowed – i.e. an “overvote” - or who mistakenly fails to ink the ballot at all – i.e. a blank ballot. Pollworkers will advise any voter who has overvoted or submitted a blank ballot of the opportunity to make a correction before casting his/her ballot (InkaVote Plus gives voters a second chance to ensure their votes are cast as intended). If no such errors were made, the voted ballot is accepted by the reader and automatically drops into a secure ballot box.

The second component is an audio ballot booth. This equipment is available in each precinct to assist voters who are blind or have specific needs to enable private and independent voting using an audio headset to create a paper InkaVote ballot. Audio voting may also be popular with voters whose primary language is other than English. The audio ballot is available in Chinese, Japanese, Korean, Spanish, Tagalog/Filipino and Vietnamese. The second chance voting feature provided by the ballot reader, together with the audio ballot booth, assures Los Angeles County is compliant with the Help America Vote Act and the Voting Rights Act.



**Acting Registrar-Recorder/County Clerk Dean Logan discusses the Audio Ballot Booth component of the InkaVote Plus voting system with LA County Supervisors Yvonne B. Burke and Zev Yaroslavsky during a press conference on May 16, 2008.**



## FACTS ABOUT INKAVOTE PLUS

### *Facts about*

#### **InkaVote Plus Voting System**

- Tested and approved by Federal Election Authorities (March 2006)
- Tested and certified by California Secretary of State (April 2006, January 2008)
- Used successfully for all Los Angeles County elections since November 2006

#### InkaVote Plus Voter Advantages:

- √ Prevents voters from casting blank ballots
- √ Prevents overvotes (more selections than a contest allows)
- √ Provides an audio option for:
  - Voters with visual impairments
  - Voters who prefer translation assistance

## **ABSENTEE VOTING NOW CALLED VOTE BY MAIL**

As of January 1, 2008, with the passage of Assembly Bill 1243, California's absentee voting program was redesignated as "Vote by Mail". The new name is intended to better reflect voters' rights with respect to voting by mail. In California, all registered voters have the option to vote by mail, regardless of whether they are going to be 'absent' on Election Day.

## **MODIFIED CLOSED PRIMARY NONPARTISAN VOTERS MAY CHOOSE!**

California's Election law permits political parties to allow nonpartisan voters the choice of voting for partisan candidates in **Primary** Elections.

If a person is registered as a nonpartisan voter, when going to his/her polling place, or applying for a Vote by Mail ballot, the voter will receive a nonpartisan ballot containing only nonpartisan candidates and ballot measures unless the voter requests a ballot for either:

**DEMOCRATIC PARTY  
REPUBLICAN PARTY**

These two political parties have adopted a party rule permitting nonpartisan voters to request their party ballot for the June 3, 2008 Statewide Direct Primary Election. Each of these two parties allows nonpartisan voters to choose to vote for partisan candidates.

**NOTE:** Although the **American Independent Party** has authorized crossover voting, there are no qualified American Independent Candidates on the ballot in Los Angeles County. (The

Green, Libertarian, Natural Law, and Peace & Freedom parties did not authorize nonpartisan voters to vote their ballots).

## **REVISED NONPARTISAN BALLOT**

A revised nonpartisan crossover ballot format and instructions to facilitate crossover voting will be used in the June 3<sup>rd</sup> Statewide Direct Primary Election. The revised crossover ballot eliminates the need for voters to mark an additional bubble to secure their votes for partisan candidates.

In previous primaries, nonpartisan voters choosing to crossover to another party were required to mark their ballot twice – once for the party they intended to crossover to and again for their candidate choice. The new nonpartisan crossover ballot was revised as a result of a partnership between the RR/CC and a Crossover Voting Working Group that consisted of members of organizations representing a diverse cross section of Los Angeles County voters. These groups also have extensive experience in voter education and outreach efforts.

Participants in the working group included: the California Secretary of State, representatives of the Los Angeles County Democratic, Republican and American Independent Parties, the National Association of Latino Elected and Appointed Officials (NALEO), California Common Cause, the Courage Campaign, the Asian Pacific American Legal Center (APALC), the Los Angeles League of Women Voters and the African American Voter Registration and Education Project (AAVREP).

## **INSTRUCTIONS FOR NONPARTISAN VOTERS WHO WISH TO VOTE IN PARTISAN PRIMARY CONTESTS**

### **WHO IS A NONPARTISAN VOTER?**

**Voters who registered as “Decline to State” or who did not register with a qualified political party are considered “NONPARTISAN” voters. Our records show you are a nonpartisan voter, not registered with any of these parties:**

American Independent, Democratic, Green, Libertarian, Peace & Freedom, or Republican. For information on your party status, call **(866) 481-2666**.

### **WHAT ARE MY VOTING OPTIONS?**

1. You may vote a nonpartisan ballot for statewide and local measures, and nonpartisan contests (e.g. County Supervisor, Judicial, City Council).

2. You may vote a nonpartisan “**crossover**” ballot, which includes party primary contests for federal and state legislative contests, as well as nonpartisan contests.

**Exception:** Nonpartisan crossover voters may not vote on party County Central Committee contests.

### **WHAT IS CROSSOVER VOTING?**

Nonpartisan voters may vote in partisan primaries, if the political party allows it. This is referred to as “**CROSSOVER**” voting. In this election, nonpartisan voters may choose to crossover and cast a vote in one of the following party primaries: (Casting a “crossover” ballot will not alter your registration status)

**DEMOCRATIC  
REPUBLICAN**

**NOTE:** Although the **American Independent Party** has authorized crossover voting, there are no qualified American Independent Candidates on the ballot in Los Angeles County.

## **HOW DO I REQUEST A CROSSOVER BALLOT?**

**At the Polls** – Ask the poll worker for a nonpartisan crossover ballot card for the **Democratic or Republican Party**. The poll worker will issue you the ballot and direct you to the correct voting booth for the selected party.

**Voting By Mail** – Complete **and return** the application on the back cover of the Official Sample Ballot or you may access an application on-line at [www.lavote.net](http://www.lavote.net).

**Important:** Write your party of choice in the space provided. If you have already requested a crossover ballot **by mail**, you need not reapply.

You may not request more than one party's ballot. If you do not wish to request a crossover ballot for this election, you will be provided a ballot for nonpartisan contests only.

## **VOTING OPTIONS: “Three Choices, No Excuses”**

The range of voting options available to Los Angeles County voters to cast a ballot in the June 3, 2008 Statewide Direct Primary Election includes: 1) voting by mail; 2) in person early voting at the Registrar-Recorder/County Clerk's Headquarters; or 3) voting at the designated neighborhood polling place on Election Day (location listed on back cover of sample ballot).

## **INKAVOTE PLUS VIDEO AND INFORMATION AVAILABLE ON WEBSITE**

Located on the main page of [www.lavote.net](http://www.lavote.net), the featured link can be accessed by selecting “InkaVote Plus Information” under the “Statewide Direct Primary Election” header. Once the link has been selected, users will have the option of 1) viewing the 90 second InkaVote Plus video that describes how the equipment works, 2) perusing the “InkaVote Plus” brochure for information on the what, why and how of InkaVote Plus, or 3) browsing the Frequently Asked Questions page to find answers on how InkaVote Plus protects the vote, how voters with disabilities can use InkaVote Plus and how InkaVote Plus can help voters with limited-English skills.

## **SAMPLE BALLOT VIEWING CHOICES**

Voters may now choose to view or download their full sample ballot for the June 3, 2008 Statewide Direct Primary Election from our website, [www.lavote.net](http://www.lavote.net). The website feature includes official ballot pages (also available in Chinese, Japanese, Korean, Spanish, Tagalog/Filipino and Vietnamese), candidate statements, ballot measures, analysis and arguments for or against, as applicable to the voter's ballot. There are 254 different ballot groups for this election with different local contests depending on the voter's districts. Sample ballots may be viewed by selecting “Sample Ballot Lookup” from the Quick Link menu on the Department's website.

## **STREAMLINED WEBSITE**

The Department's website was modernized and streamlined to conform to the standard format for Los Angeles County government sites. The streamlined look offers a number of user-friendly features to assist with locating the information needed. Some of these features include:

- Convenient drop down boxes providing a menu listing of operations and services with links to specific pages that contain detailed information.
- Interactive capabilities that enable users to download forms, complete and file forms online, access related featured links, and find polling place and sample ballot information.
- Quick links providing instant access to the most commonly accessed information.
- A 'Contact Us' list, providing a dropdown list to specific email boxes of the various operations of the Registrar-Recorder/County Clerk. This enables users to directly send public inquires and receive more expedient responses to inquiries.
- A new online service, the '*Vote by Mail*' ballot status allows voters to confirm that their Vote by Mail ballot has been received by the Registrar-Recorder/County Clerk's Office. This service may be accessed by selecting the " VOTE BY MAIL STATUS" option in the Quick Links menu on the RR/CC's Home Page.

## **DEPUTY REGISTRAR TRAINING PROGRAM**

The Los Angeles County Registrar-Recorder/County Clerk has a Deputy Registrar Training program for those organizations and individuals involved in registering voters and conducting petition drives. The training provides the proper methods and techniques for registering voters, guides those assisting voters with the completion of voter registration forms, and covers California Election Code Sections related to registration requirements. Please contact the Voter Records Administrative Unit (Patt Sanders 562-462-2881 or Abigail Chavez 562-462-2937) if your organization is interested in participating in the program or for further information.

## **NEIGHBORHOOD VOTING CENTERS (NVCs)**

In an effort to recruit and retain voting locations that are visible, stable, sizeable, accessible for voters with disabilities and with adequate parking, the County must select voting locations that are larger. NVCs fit this description and accommodate more than one precinct.

Between major elections, traditionally between 10-15 percent of Los Angeles County's polling places must be replaced because previously used locations are no longer available. The transition to NVCs involves identifying and securing long-term partnerships with polling place hosts, which will achieve desired stability and minimize voter confusion. Examples include government buildings, schools, recreation centers and community centers.

Our Department provides a variety of services to assist in directing voters to their correct polling locations including listing the poll address on the back cover of all sample ballot booklets, posting poll addresses on our website and an automated phone system which can be accessed 24 hours a day to determine where to vote. Partners, including city clerks and representatives of many community based organizations all assist in responding to thousands of voter inquiries and help direct voters to correct polling locations using the Department's interactive website and toll free numbers.

## **“BALLOT EXPRESS” WILL-CALL SERVICE FOR VOTE BY MAIL BALLOT PICK-UP**

Since the 2004 General Election, the Registrar has offered a convenient service entitled Ballot Express, a “will-call” service for vote by mail voters. Traditionally, thousands of voters walk into our Norwalk office to apply for and pick up a vote by mail ballot. The volume is especially high during the week prior to a major election, which previously resulted in voters waiting for up to 30 minutes for service. The Ballot Express service allows voters to call our office in advance and arrange to have a vote by mail ballot ready when they arrive at the office. Any registered voter is eligible to use the Ballot Express service.

## **CAMPAIGN FINANCIAL DISCLOSURE STATEMENTS**

Interested persons may view campaign finance reports for County offices on the Registrar-Recorder/County Clerk’s website, [www.lavote.net](http://www.lavote.net).

To check out this addition to the Registrar-Recorder/County Clerk’s website, click on **“Campaign Finance Reports.”** This will take viewers directly to the Campaign Finance Reports page where search indexes can be found by Election, Candidate name, Committee and Measure. The reports are provided as PDF files. To view these files requires a free Adobe Acrobat Reader. A link to download this application is available on the Campaign Finance Reports page.

## **MULTILINGUAL VOTER SERVICES**

In a continuous effort to assist voters whose primary language is other than English, the Registrar-Recorder/County Clerk’s website has been expanded to include information on voting services in Chinese, Japanese, Korean, Spanish, Tagalog/Filipino and Vietnamese (the languages mandated for translation in compliance with the U.S. Voting Rights Act). Viewers have translated links located on the Registrar-Recorder/County Clerk’s home page into these specific languages for accessibility. When clicked, viewers will find a Multilingual Assistance Hotline (800) 481-8683, which is a toll free number for voters to request translated materials (i.e., voter registration forms and sample ballot booklets) in a specific language. Hard copies of the “Multilingual Voter Services” brochure are available upon request, or can be viewed on our website, [www.lavote.net](http://www.lavote.net).

## **POLL LOCATION AVAILABLE BY AUTOMATED PHONE**

Determining poll locations for voters calling us prior to and on Election Day is facilitated through two Interactive Voice Response (IVR) servers containing 192 lines, as well as a live phone bank with more than 100 operators. When calling 1-800-815-2666, each caller is prompted to enter his/her zip code, the digits corresponding to the voter’s house number and numeric birth date. The IVRs will instantly interact with the voter registration database seeking a match for this data. When the polling location is found, the system will automatically read the location to the voter. This phone system allows up to 192 callers to call in at the same time, 24 hours a day available through Election Day. Operators are also available to assist callers who want to speak with a “live” operator.

## VOTERS WITH DISABILITIES

What is our goal? 100% participation of eligible voters in all elections, 100% polling place accessibility, and options for all voters who seek independent voting. In compliance with federal law and state law, we provide services to voters with disabilities including:

- InkaVote Plus audio ballot booth at every polling place
- Accessible polling places wherever possible (Currently, 98% of polls are accessible)
- Wheelchair accessible voting booths
- Large type voting instructions and magnifying devices at polling places
- Audio cassette tapes with state and county ballot measures
- Vote-by-mail and permanent vote-by-mail voting options
- Pollworker assistance at any step

*What does the law say? Four federal laws are of special importance to voters with disabilities and the elderly:*

- *Voting Rights Act of 1965* – Any voter requiring assistance may receive it from a person of the voter's choice, other than the voter's employer or agent of that employer or officer or agent of the voter's union.
- *Voting Accessibility for the Elderly and Handicapped Act, 1984* – Promotes the fundamental right to vote by requiring "access for elderly and handicapped individuals to registration facilities and polling places in federal elections."
- *Americans with Disabilities Act of 1990 (ADA)* – Requires public entities to provide auxiliary aids and services where necessary to afford an individual with a disability an equal opportunity to participate in, and enjoy, the benefits of service, program or activity conducted by a public entity.
- *Help America Vote Act of 2002 (HAVA)* – At least one direct recording electronic voting system or other voting system available at each polling location to enable individuals with disabilities including blind voters to vote independently.

## POLLWORKER RECRUITING AND TRAINING ENHANCEMENTS

- **"County Pollworker" Program.** This program permits Los Angeles County employees to be reassigned (with permission of their supervisors) to the Registrar's Office to serve as pollworkers on Election Day. Since the program's inception in 1998, more than 28,600 County employees have served as pollworkers. We anticipate more than 3,000 County employees will serve for the June 3, 2008 Statewide Direct Primary Election.
- **Pollworker Training Classes.** In advance of the June 3, 2008 Statewide Direct Primary Election, more than 500 pollworker training classes were held. Designated classes include language assistance for bilingual pollworkers.
- **Student Pollworkers.** As noted in the "Democracy in Action" section of this Media Kit, California law allows the recruitment of high school students 16 years or older to serve as pollworkers. Since the program's inception in 1998, over 15,800 students throughout Los Angeles County have participated in the Student Pollworker Program. We anticipate over 2,000 high school students will serve for the June 3, 2008 Statewide Direct Primary Election.

## ABOUT OUR DEPARTMENT AND PROGRAMS

### GENERAL INFORMATION

The Registrar-Recorder/County Clerk is responsible for registration of voters; maintenance of registration files; conducting federal, state, local and special district elections; checking initiatives, referenda and recall petitions; filing campaign reports; recording real estate documents and other records; maintaining birth, death and marriage records; issuing marriage licenses, and filing business documents. The fiscal year 2007-2008 budget of the Registrar-Recorder/County Clerk is approximately \$178 million and annually the Department collects over \$318 million in revenue for the County General Fund and its 88 cities. The Department's permanent budgeted staff is 1,130.

Los Angeles County has a population of roughly 10 million residents, which accounts for approximately 30% of the total population of the State of California. Los Angeles County has more residents than any other County in the nation. Los Angeles County, with more than 500 political districts and more than 4 million registered voters, is the largest and most complex election jurisdiction in the country. More ballots were cast in Los Angeles County for the November 2004 General Election (3,085,582) than were cast statewide in 41 of 50 states. That election also broke virtually every previous County record and statistic ever compiled. A sample of the staggering statistics includes: record number of voters casting ballots (79% voter turnout), and the largest number of pollworkers (30,381). In addition to presidential and gubernatorial primary and general elections, the Department provides support services for approximately 200 city, school and special district elections each year.

The administration of a countywide election is akin to a major military deployment. For example, the June 3, 2008 Statewide Direct Primary Election requires processing candidates, recruiting and training 25,000+ precinct workers and mailing sample ballot information pamphlets to 4 million+ registered voters. We anticipate issuing more than 700,000 vote by mail ballots and expect to count approximately 2 million ballots for this election.

### A STATISTICAL OVERVIEW

|  |            |
|--|------------|
| • Number of Registered Voters .....                      | 4,062,257* |
| • Number of Elective Contests Involved in Election ..... | 246        |
| • Number of Ballot Measures .....                        | 8          |
| Statewide (Props 98-99) .....                            | 2          |
| Local Districts.....                                     | 6          |
| • Number of Poll Locations .....                         | 4,383      |
| • Number of Precinct Officers .....                      | 25,000+    |
| • Number of Ballot Groups .....                          | 254        |

\*Figure as of May 20 2008.

## VOTE BY MAIL BALLOT INFORMATION (HOW TO, TRENDS, COUNTING)

**An Interesting History**.....Absentee voting goes back a long way. In fact it all began during the Civil War when the first absentee ballots were allowed by the North for soldiers and sailors. California first allowed absentee voting in 1920. Universal absentee voting began in 1978. Prior to 1978, absentee ballots were available only to the ill and disabled, those who lived too far from the polls and in other special circumstances. As a result of the change in legislation allowing any person to vote absentee, it has become a very popular means to cast a ballot. For the November 2, 2004 General Election 816,637 absentee ballots were requested and 701,693 absentee ballots were cast. As of January 1, 2008, with the passage of Assembly Bill 1243, California's absentee voting program was redesignated as "Vote by Mail".

The first day to apply for a vote by mail ballot for the 2008 Statewide Direct Primary Election was May 5. Vote by mail requests must be received no later than May 27. Vote by mail ballots may be requested in one of five ways:

- By filling out the Vote by Mail Application on the back cover of the sample ballot sent to each registered voter
- By written request to the Registrar-Recorder/County Clerk's Office, Document Receipt, P.O. Box 30450, Los Angeles 90030-0450
- By Fax to (562) 462-2354
- By visiting the Registrar-Recorder/County Clerk's website [www.lavote.net](http://www.lavote.net) and completing an online application
- In person at the Registrar-Recorder/County Clerk's Office, 12400 Imperial Highway, Norwalk, 3<sup>rd</sup> Floor, Room 3002

Vote by mail ballots cannot be requested over the telephone.

**The following provides a list of remedies if you applied for a vote by mail ballot and have not received it within a week after mailing your application.**

- Call the Registrar-Recorder/County Clerk's office to request a replacement vote by mail ballot;
- Vote at the Registrar's Office during the vote by mail period (from 29 days prior to the election through election day);
- Vote at your designated neighborhood polling location.

To be counted, all voted vote by mail ballots must be mailed in time to be received by the Registrar's Office by 8:00 p.m. on June 3, or dropped off at any polling place in the County no later than 8:00 p.m. on Election Day.

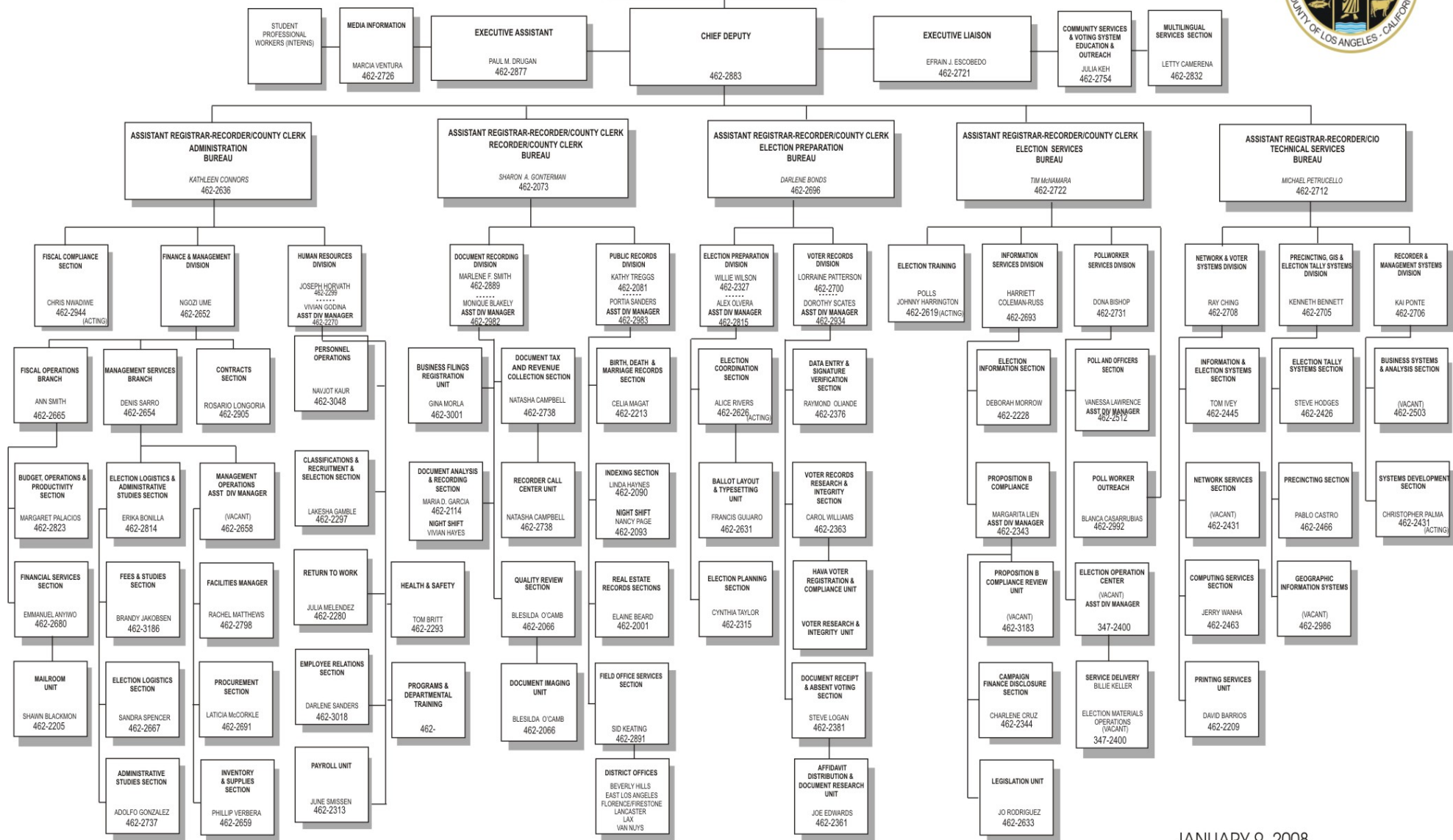
The voter may authorize a designated family member to return their voted ballot to any polling place in the County or to the Registrar's Office. Under special circumstances a voter may request an emergency vote by mail ballot beginning May 28 through Election day, June 3. For additional information regarding this service or any questions regarding vote by mail voting, call the Document Receipt and Vote by Mail Section at (562) 466-1323 between the hours of 8 a.m. and 5 p.m., Monday through Friday or go online to [www.lavote.net](http://www.lavote.net).



# REGISTRAR-RECORDER/COUNTY CLERK ORGANIZATION CHART 2008

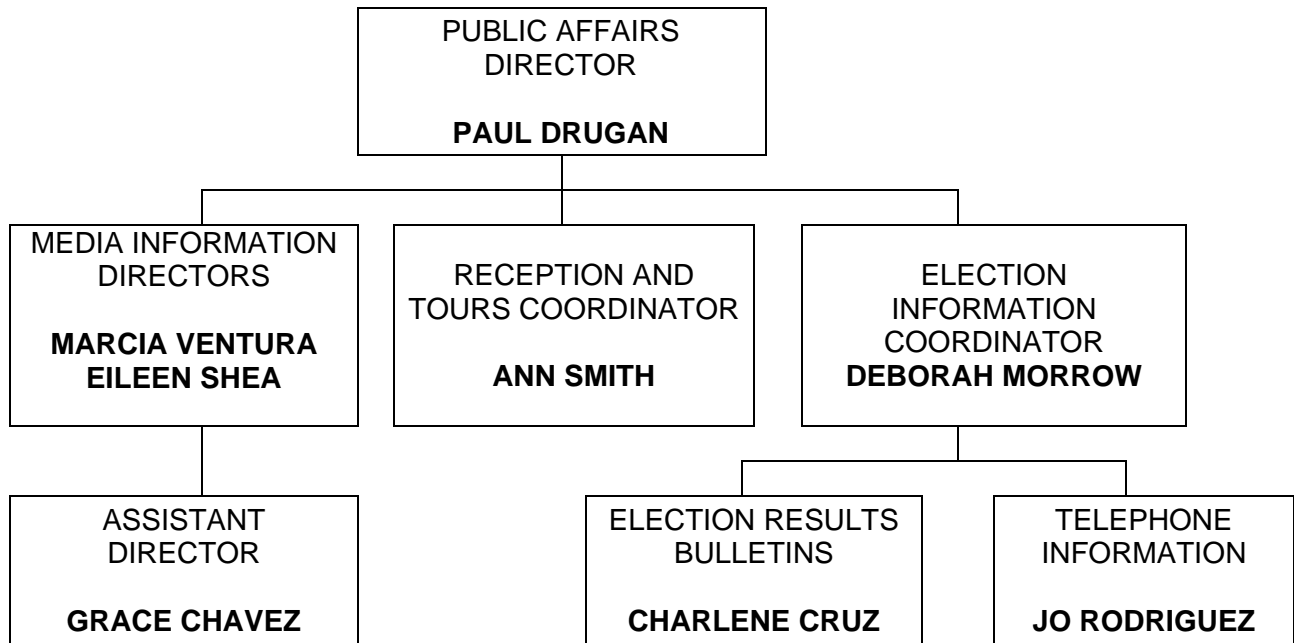


**ACTING REGISTRAR-RECORDER/COUNTY CLERK**  
**DEAN C. LOGAN**  
 (562) 462-2883



JANUARY 9, 2008

# ORGANIZATION CHART PUBLIC RELATIONS - ELECTION NIGHT



# DEMOCRACY IN ACTION PROGRAMS



## HIGH SCHOOL (H.S.) STUDENT POLLWORKER PROGRAM

### What Is the H.S. Student Pollworker Program?

The H.S. Student Pollworker Program (SPP) provides high school students with an exciting opportunity to serve as pollworkers on Election Day. It is a great way to introduce young people to Democracy in Action and at the same time provides students a valuable community service opportunity.

### What are the Program Qualifications?

- 16 years or older
- U.S. Citizen
- Good academic standing
- Grade point average of 2.5 or greater
- Must have teacher and parental consent

### What Are The Program Benefits?

#### For Students

- Earn extra credit in class or fulfill their service learning credit
- Get paid \$80 for working on Election Day plus an additional \$25 if they attend training
- Hands on introduction to Democracy in Action
- Looks great on college/scholarship applications and resumes

#### For Teachers

- Complements the students' in-class civics curriculum requirements
- Their students express their appreciation for the voting process and use their new knowledge in class
- Teacher Coordinators are paid \$100 for coordinating the program at their school plus an additional \$25 bonus if they attend a training class

#### For Veteran Pollworkers

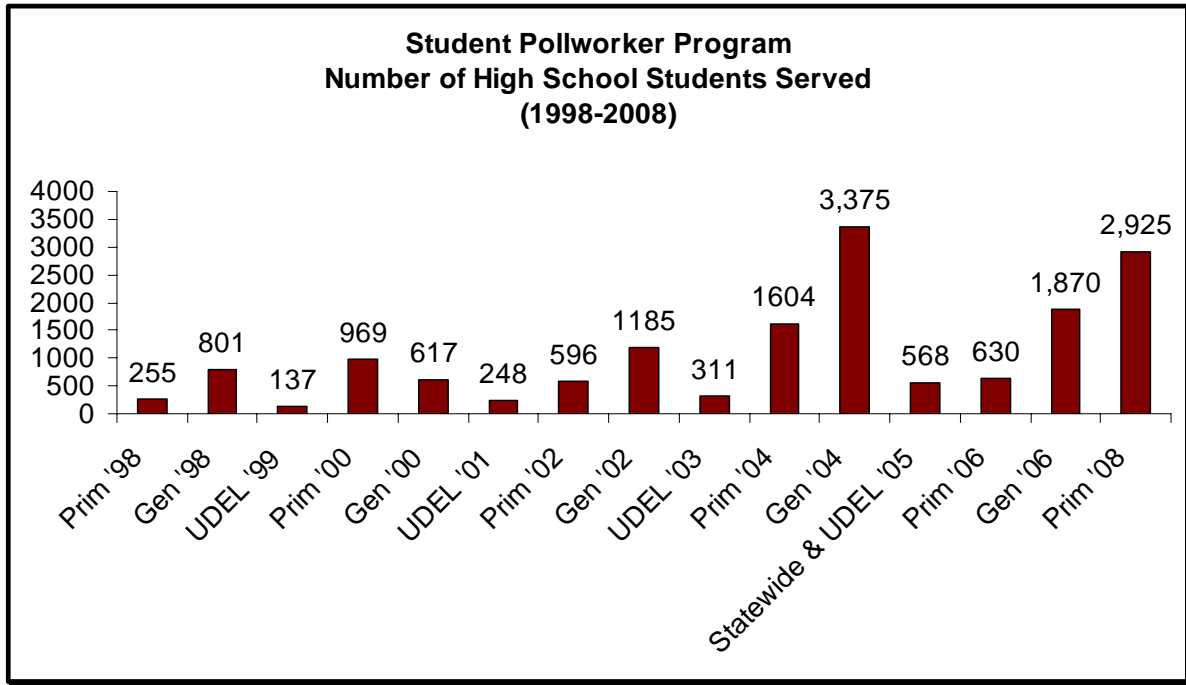
- Students bring new energy and enthusiasm
- Students can assist with carrying and setting up heavy election supplies

#### For Election Officials

- An additional pool of pollworkers from which to recruit
- Students are more likely to show up on election day because they have made a commitment to their teachers
- Students are in "learning mode" so they quickly absorb complex election procedures covered in training
- Many students are bilingual

## STUDENT POLLWORKER

## PARTICIPATION HISTORY



**LA County High School students prepare to work the polls on Election Day.**

# COUNTY POLLWORKER PROGRAM

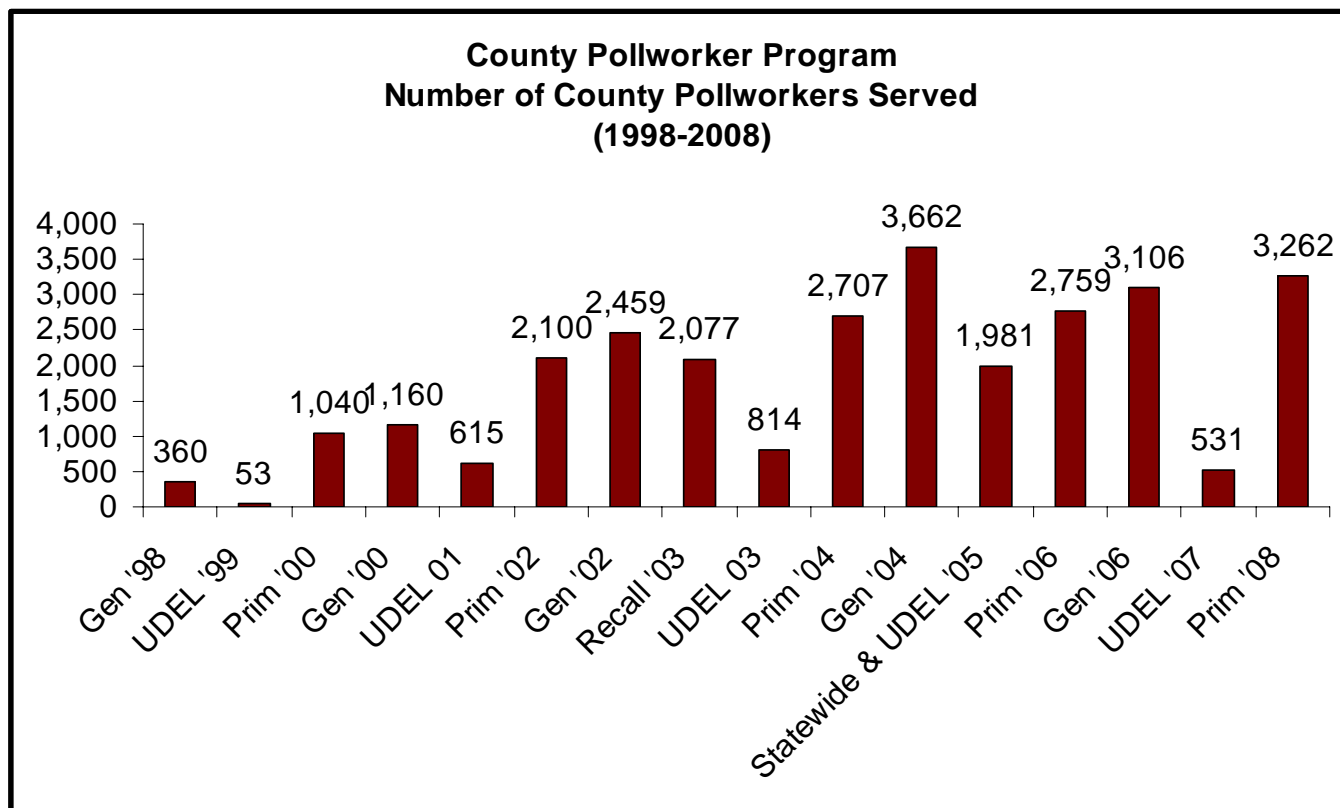


## Overview

Critical pollworker recruiting problems and Election Day "no shows" forced election officials nationwide to turn to increasingly creative ways to supplement the traditional force of dedicated pollworkers. A pilot "County Employee Voluntary Pollworker Program" was created and has been in effect since November 1998. The Board of Supervisors endorsed this pilot program permitting voluntary "reassignment" of County employees (with their supervisor approval) to the Department of Registrar-Recorder/County Clerk on Election Day. Based on the great success of the pilot program, the Board of Supervisors approved the transition of the pilot "County Employee Voluntary Pollworker Program", as a permanent County Program on July 31, 2001.

For the November 1998 Gubernatorial Election, 360 County employees served as "County Pollworkers." The program has since expanded to a record number of 3,662 who served in the November 2004 Presidential Election. Participation from county employees continues to be successful. For the February 2008 Presidential Primary Election 3,262 County Employees served. The program is popular with County employees, providing participants with a community service opportunity while helping alleviate critical pollworker shortages.

## PARTICIPATION HISTORY



## **ELECTION NIGHT VOLUNTEER PROGRAM**

We are continuing an innovative program to utilize volunteers to replace paid workers in the processing of ballots on election night. The **“Election Night Volunteer Program”** was implemented to reduce expenditures and simultaneously promote community involvement in the election process. Since the inception of the program in the 1996 General Election, **approximately 3,100 students from various local high schools have volunteered** to work in the Tally Center - Election Headquarters. Teachers are given a stipend when accompanying a group of volunteers to work in the Tally Center Election Headquarters. Teacher involvement has been a major component of the success of this program. Student volunteers benefit by receiving a first hand view of democracy at work, creating an understanding of the election process through community service and school extra credit from their teachers. For the June 3, 2008 Statewide Direct Primary Election, approximately 150 students have been recruited to perform a variety of assignments including ballot receipt, unpacking and inspection.

## **COMMUNITY PARTNERSHIPS**

In 1998, we established the Community Voter Outreach Committee (CVOC) to maximize the County’s voter outreach to the community. We forged strong partnerships with over 100 community organizations including the Los Angeles County League of Women Voters (LWV), the National Association of Latino Elected Officials (NALEO), Center for Asian Americans United for Self Empowerment (CAUSE), Korean Resource Center, Independent Living Center, Braille Institute, NAACP - Los Angeles, Southern California Rehabilitation Services, United Cerebral Palsy - Los Angeles, the Asian Pacific American Legal Center and many more.

## **PARTNERSHIP WITH DMV**

In our continued commitment to increase voter participation, extend community outreach and improve customer service, procedures were developed and programs implemented to enhance the voter outreach programs and our partnership with the Department of Motor Vehicles (DMV) to improve the federally mandated DMV “motor voter” registration program. This proactive, enhanced program which started in 1993 includes on-site visits to DMV staff meetings at local DMV offices and regular communication between the Registrar-Recorder/County Clerk and DMV staff; conducting on-site voter registration drives at designated DMV office locations prior to major elections. The program’s goal is to reduce the number of persons attempting to register at their local DMV office who encounter a problem. This program has been commended by the Secretary of State.



# CHECK OUT OUR WEBSITE!

[www.lavote.net](http://www.lavote.net)

Web Site of the Los Angeles County Registrar-Recorder/County Clerk (RR/CC)

## HERE'S WHAT YOU CAN LOOK UP:

### Election Information



- ★ ["Voter Registration"](#) – Want to register to vote? Find out if you are eligible, where to obtain a registration form, and how to register by mail.
- ★ ["Where Do I Vote?"](#) - Look up your neighborhood polling place (if 18 and registered to vote).
- ★ ["What Are My Districts?"](#) - Did you know you might be eligible to vote in a Mosquito Abatement District? Find out all the districts in which you are eligible to vote.
- ★ ["Who Are My Elected Officials?"](#) – Find out who represents you in such districts as the Board of Supervisors, assembly, senate, congressional, etc.
- ★ ["Vote by Mail Voting"](#) – Receive information regarding vote by mail ballots by downloading a vote by mail ballot application.
- ★ ["Vote by Mail" Status](#) – Confirm that a Vote by Mail Ballot has been received by the Registrar-Recorder/County Clerk's Office.
- ★ ["Election Results"](#) – Get up to the minute "live" results on Election Night and check whether your favored candidates or measures are winning.
- ★ ["Election Calendar/District Elections"](#) – Find out the deadlines for candidates to file nomination documents for upcoming elections. Find out what elections will take place and their scheduled dates.
- ★ ["News Releases"](#) – Find out about important events, elections, and deadlines affecting Los Angeles County elections.
- ★ ["Political Party Information"](#) – Find out information, events, candidates, etc. about the political party that interests you.
- ★ ["Candidate Registration"](#) – Registration information is provided on-line. You may find what offices will be on the ballot and the qualifications needed to become a candidate.
- ★ ["What's On My Sample Ballot?"](#) – View your actual ballot, including candidates and ballot measures applicable to your geographic area (congressional, state, assembly, etc.).
- ★ ["County Initiative Procedures"](#) – You may view the procedures that must be followed in order to place a county initiative on the ballot.
- ★ ["Multilingual Voter Services"](#) – Find out about services for voters who require assistance in Chinese, Japanese, Korean, Spanish, Tagalong/Filipino and Vietnamese.
- ★ ["Who Is My City Clerk?"](#) – Don't forget about local elections where your vote can really make a difference. Call your City Clerk and find out about your next local election.

# ELECTION STATISTICS

## A STATISTICAL OVERVIEW

- Number of Registered Voters ..... 4,062,257\*
- Number of Elective Contests Involved in Election ..... 246
- Number of Ballot Measures ..... 8
  - Statewide (Props 98-99) ..... 2
  - Local Districts..... 6
- Number of Poll Locations ..... 4,383
- Number of Precinct Officers ..... 25,000+
- Number of Ballot Groups ..... 254

## VOTER REGISTRATION STATISTICS

In Los Angeles County, current voter registration for the June 3, 2008 Statewide Primary Election is:

|                           | REGISTRATION*    | PERCENTAGE  |
|---------------------------|------------------|-------------|
| Democratic                | 2,019,150        | 50.72       |
| Republican                | 991,850          | 25.50       |
| American Independent      | 69,339           | 1.74        |
| Green                     | 22,472           | .58         |
| Libertarian               | 17,262           | .44         |
| Natural Law               | 6,987            | .18         |
| Peace and Freedom         | 20,706           | .56         |
| Decline to State          | 768,185          | .62         |
| Nonpartisan               | 31,900           | 19.66       |
| <b>TOTAL REGISTRATION</b> | <b>3,956,511</b> | <b>100%</b> |

Voter registration for the five Supervisorial districts within Los Angeles County is provided below:

|  | REGISTRATION*    |
|--|------------------|
| First Supervisorial District<br>Gloria Molina            | 634,145          |
| Second Supervisorial District<br>Yvonne Brathwaite Burke | 717,814          |
| Third Supervisorial District<br>Zev Yaroslavsky          | 869,501          |
| Fourth Supervisorial District<br>Don Knabe               | 880,539          |
| Fifth Supervisorial District<br>Michael D. Antonovich    | 960,258          |
| <b>TOTAL</b>   | <b>4,062,257</b> |

\*Figure as of May 20, 2008.



**HISTORICAL VOTER REGISTRATION AND VOTER TURNOUT INFORMATION  
PRESIDENTIAL AND GUBERNATORIAL PRIMARY AND GENERAL ELECTIONS**

| ELECTION                     | YEAR | REG       | DEMOCRATIC         | REPUBLICAN         | AMERICAN INDEPENDENT | GREEN         | LIBERTARIAN   | NATURAL LAW   | PEACE & FREEDOM | REFORM        | MISC.          | DECLINE TO STATE | TURNOUT   | TURNOUT % |
|------------------------------|------|-----------|--------------------|--------------------|----------------------|---------------|---------------|---------------|-----------------|---------------|----------------|------------------|-----------|-----------|
| Presidential Primary – 02/08 |      | 3,951,957 | 1,363,845 (69.06%) | 551,722 (53.77%)   | 24,385 (35.46%)      | 8,035 (32.%)  | 6,155 (33%)   | N/A           | 3,776 (16%)     | N/A           | N/A            | 226,081 (27.98%) | 2,183,998 | 55.26%    |
| Gubernatorial General-11/06  |      | 3,899,397 | 1,944,597 (49.87%) | 1,048,792 (26.90%) | 64,736 (1.66%)       | 25,350 (.65%) | 18,207 (.47%) | 7,817 (.20%)  | 23,579 (.60%)   | N/A           | 24,260 (.62%)  | 742,059 (19.03%) | 2,033,119 | 52.14%    |
| Gubernatorial Primary-6/06   |      | 3,826,979 | 1,923,656 (32.58%) | 1,023,910 (29.64%) | 63,671 (13.45%)      | 25,349 (.20%) | 17,917 (.20%) | 7,957 (.09%)  | 23,689 (.08%)   | N/A           | N/A            | 100,194 (13.42%) | 1,050,076 | 27.44%    |
| Presidential General-11/04   |      | 3,972,738 | 2,016,280 (50.75%) | 1,071,615 (26.97%) | 67,091 (1.69%)       | 27,858 (.70%) | 18,952 (.48%) | 10,136 (.26%) | 28,654 (.72%)   | N/A           | 26,103 (.66%)  | 706,049 (18.8%)  | 3,085,582 | 79.1%     |
| Presidential Primary-3/04    |      | 3,670,157 | 1,872,335 (51.02%) | 1,022,449 (27.86%) | 60,131 (1.64%)       | 27,371 (.75%) | 18,307 (.50%) | 10,930 (.30%) | 30,744 (.84%)   | 13,397 (.34%) | 25,492 (.69%)  | 602,398 (16.41%) | 1,379,747 | 37.59%    |
| Gubernatorial General-11/02  |      | 3,962,831 | 2,071,424 (52.27%) | 1,092,389 (27.57%) | 68,461 (1.73%)       | 27,113 (.68%) | 20,584 (.52%) | 18,543 (.47%) | N/A             | 16,087 (.39%) | 48,601 (1.23%) | 602,319 (15.19%) | 1,784,320 | 45.03%    |
| Gubernatorial Primary-3/02   |      | 4,142,514 | 2,184,349 (52.73%) | 1,135,585 (27.41%) | 73,798 (1.78%)       | 26,947 (.65%) | 21,933 (.53%) | 22,424 (.54%) | N/A             | 17,429 (.43%) | 47,231 (1.14%) | 614,160 (14.83%) | 1,070,651 | 25.85%    |
| Presidential General-11/00   |      | 4,075,037 | 2,168,085 (53.20%) | 1,132,380 (27.79%) | 71,567 (7.76%)       | 24,014 (.59%) | 20,829 (.51%) | 23,796 (.58%) | N/A             | 18,871 (.50%) | 38,415 (.94%)  | 578,522 (14.20%) | 2,769,927 | 67.97%    |
| Presidential Primary-3/00    |      | 3,808,488 | 2,022,316 (53.10%) | 1,070,759 (28.11%) | 66,924 (1.76%)       | 20,767 (.54%) | 19,036 (.50%) | 25,775 (.68%) | N/A             | 17,979 (.47%) | 38,651 (1.01%) | 525,389 (13.80%) | 1,836,153 | 48.21%    |
| Gubernatorial General-11/98  |      | 3,854,826 | 2,079,930 (53.96%) | 1,118,725 (29.02%) | 64,088 (1.66%)       | 15,358 (.40%) | 17,680 (.46%) | 24,155 (.63%) | 23,168 (.60%)   | 18,893 (.50%) | 14,368 (.37%)  | 479,375 (12.44%) | 2,058,862 | 53.41%    |
| Gubernatorial Primary- 6/98  |      | 3,772,593 | 2,035,586 (53.96%) | 1,106,879 (29.34%) | 61,980 (1.64%)       | 14,623 (.39%) | 16,642 (.44%) | 25,427 (.67%) | 22,743 (.60%)   | 21,635 (.56%) | 13,775 (.37%)  | 456,045 (12.09%) | 1,450,126 | 38.44%    |
| Presidential General-11/96   |      | 3,857,805 | 2,084,994 (54.05%) | 1,174,039 (30.43%) | 59,759 (1.55%)       | 13,608 (.35%) | 15,848 (.41%) | 30,676 (.80%) | 22,389 (.58%)   | 24,205 (.67%) | 13,855 (.36%)  | 421,002 (10.91%) | 2,505,790 | 64.95%    |
| Presidential Primary-3/96    |      | 3,620,677 | 1,945,759 (53.74%) | 1,130,664 (31.23%) | 53,004 (1.46%)       | 12,108 (.33%) | 14,739 (.41%) | 35,921 (.99%) | 20,795 (.57%)   |               | 11,815 (.33%)  | 371,667 (10.27%) | 1,346,358 | 37.18%    |
| Gubernatorial General-11/94  |      | 3,665,868 | 2,037,899 (55.59%) | 1,162,889 (31.72%) | 49,158 (1.34%)       | 11,641 (.32%) | 14,854 (.41%) |               | 18,833 (.51%)   |               | 11,942 (.33%)  | 358,652 (9.78%)  | 2,147,678 | 58.58%    |
| Gubernatorial Primary- 6/94  |      | 3,550,877 | 1,952,955 (55.00%) | 1,135,792 (31.99%) | 49,832 (1.40%)       | 12,180 (.34%) | 14,899 (.42%) |               | 19,791 (.56%)   |               | 11,746 (.33%)  | 353,682 (9.96%)  | 1,128,308 | 31.77%    |
| Presidential General- 11/92  |      | 3,744,096 | 2,061,025 (55.05%) | 1,211,010 (32.34%) | 50,511 (1.35%)       | 11,782 (.31%) | 15,468 (.41%) |               | 20,681 (.55%)   |               | 12,483 (.33%)  | 361,136 (9.65%)  | 2,831,077 | 75.61%    |
| Presidential Primary-6/92    |      | 3,338,914 | 1,801,052 (53.94%) | 1,152,096 (34.51%) | 37,215 (1.11%)       | 11,346 (.34%) | 13,368 (.40%) |               | 19,763 (.59%)   |               | 8,189 (.25%)   | 295,885 (8.86%)  | 1,612,673 | 48.29%    |
| Gubernatorial General-11/90  |      | 3,487,180 | 1,902,797 (54.57%) | 1,233,739 (35.38%) | 33,728 (.97%)        |               | 12,664 (.36%) |               | 16,555 (.47%)   |               | 8,564 (.25%)   | 279,133 (8.00%)  | 1,925,811 | 55.22%    |
| Gubernatorial Primary- 6/90  |      | 3,402,509 | 1,867,425 (54.88%) | 1,195,247 (35.13%) | 33,078 (.97%)        |               | 12,086 (.36%) |               | 16,245 (.48%)   |               | 7,439 (.22%)   | 270,989 (7.96%)  | 1,283,079 | 37.70%    |
| Presidential General-11/88   |      | 3,767,094 | 2,090,442 (55.49%) | 1,314,490 (34.89%) | 36,480 (.97%)        |               | 13,042 (.35%) |               | 15,162 (.40%)   |               | 7,092 (.19%)   | 290,386 (7.71%)  | 2,733,229 | 72.55%    |
| Presidential Primary- 6/88   |      | 3,416,191 | 1,901,392 (55.66%) | 1,186,728 (34.74%) | 33,244 (.97%)        |               | 12,719 (.37%) |               | 14,951 (.44%)   |               | 5,397 (.16%)   | 261,760 (7.66%)  | 1,585,837 | 46.42%    |
| Gubernatorial General-11/86  |      | 3,543,382 | 1,965,052 (55.46%) | 1,249,160 (35.25%) | 33,780 (.95%)        |               | 14,806 (.42%) |               | 13,880 (.39%)   |               | 6,137 (.17%)   | 260,567 (7.35%)  | 2,125,838 | 59.99%    |
| Gubernatorial Primary- 6/86  |      | 3,385,207 | 1,898,052 (56.07%) | 1,175,335 (34.72%) | 32,331 (.96%)        |               | 14,686 (.43%) |               | 13,280 (.39%)   |               | 6,243 (.18%)   | 245,280 (7.25%)  | 1,307,146 | 38.61%    |
| Presidential General-11/84   |      | 3,662,766 | 2,091,169 (57.09%) | 1,229,333 (33.56%) | 36,414 (.99%)        |               | 17,657 (.48%) |               | 13,652 (.37%)   |               | 6,357 (.17%)   | 268,184 (7.32%)  | 2,705,966 | 73.87%    |
| Presidential Primary-6/84    |      | 3,236,714 | 1,879,697 (58.07%) | 1,050,099 (32.44%) | 31,955 (.99%)        |               | 17,558 (.54%) |               | 12,582 (.39%)   |               | 6,401 (.20%)   | 238,422 (7.37%)  | 1,595,801 | 49.30%    |
| Gubernatorial General-11/82  |      | 3,300,239 | 1,928,193 (58.43%) | 1,052,761 (31.90%) | 32,578 (.99%)        |               | 21,220 (.64%) |               | 13,175 (.40%)   |               | 6,718 (.20%)   | 245,594 (7.44%)  | 2,301,004 | 69.72%    |
| Gubernatorial Primary-6/82   |      | 3,070,961 | 1,784,313 (58.10%) | 988,370 (32.18%)   | 29,824 (.97%)        |               | 20,553 (.67%) |               | 12,152 (.40%)   |               | 6,664 (.22%)   | 229,085 (7.46%)  | 1,626,332 | 52.95%    |
| Presidential General-11/80   |      | 3,262,932 | 1,898,256 (58.18%) | 1,053,861 (32.30%) | 31,147 (.95%)        |               | 24,699 (.76%) |               | 12,087 (.37%)   |               | 7,228 (.22%)   | 235,654 (7.22%)  | 2,498,064 | 76.55%    |
| Presidential Primary-6/80    |      | 2,986,846 | 1,757,445 (58.84%) | 973,385 (32.59%)   | 22,465 (.75%)        |               | 22,870 (.77%) |               | 10,202 (.34%)   |               | 6,335 (.21%)   | 194,124 (6.50%)  | 1,916,660 | 64.17%    |
| Gubernatorial General-11/78  |      | 3,090,768 | 1,869,113 (60.47%) | 994,858 (32.19%)   | 17,167 (.56%)        |               |               |               | 8,433 (.27%)    |               | 8,399 (.27%)   | 192,798 (6.24%)  | 2,122,733 | 68.67%    |
| Gubernatorial Primary-6/78   |      | 2,888,324 | 1,733,404 (60.01%) | 953,016 (33.00%)   | 14,706 (.51%)        |               |               |               | 7,274 (.25%)    |               | 7,178 (.25%)   | 172,746 (5.98%)  | 2,140,054 | 74.09%    |
| Presidential General-11/76   |      | 3,138,209 | 1,892,970 (60.32%) | 1,029,522 (32.81%) | 12,991 (.41%)        |               |               |               | 8,330 (.27%)    |               | 8,158 (.26%)   | 186,238 (5.93%)  | 2,544,733 | 81.08%    |
| Presidential Primary-6/76    |      | 2,787,431 | 1,666,225 (59.78%) | 956,666 (34.42%)   | 8,553 (.31%)         |               |               |               | 6,441 (.23%)    |               | 7,230 (.26%)   | 142,316 (5.10%)  | 1,985,851 | 71.24%    |
| Gubernatorial General-11/74  |      | 3,286,898 | 1,925,811 (58.59%) | 1,127,428 (34.30%) | 13,615 (.41%)        |               |               |               | 13,970 (.43%)   |               | 14,266 (.43%)  | 191,808 (5.84%)  | 2,057,734 | 62.60%    |
| Gubernatorial Primary-6/74   |      | 3,197,078 | 1,854,824 (58.02%) | 1,121,954 (35.09%) | 13,645 (.43%)        |               |               |               | 14,087 (.44%)   |               | 15,036 (.47%)  | 177,532 (5.55%)  | 1,652,878 | 51.69%    |
| Presidential General-11/72   |      | 3,613,450 | 2,075,753 (57.40%) | 1,268,728 (35.10%) | 17,897 (.50%)        |               |               |               | 21,799 (.60%)   |               | 23,758 (.70%)  | 205,515 (5.70%)  | 2,906,597 | 80.43%    |
| Presidential Primary- 6/72   |      | 3,223,825 | 1,863,213 (57.80%) | 1,145,172 (35.50%) | 18,685 (.60%)        |               |               |               | 22,605 (.70%)   |               | 19,705 (.60%)  | 154,445 (4.80%)  | 2,210,152 | 68.93%    |
| Gubernatorial General-11/70  |      | 3,116,095 | 1,753,229 (56.26%) | 1,193,254 (38.29%) | 29,256 (.94%)        |               |               |               | 14,128 (.45%)   |               | 3,756 (.12%)   | 122,472 (3.93%)  | 2,352,697 | 75.52%    |
| Gubernatorial Primary-6/70   |      | 2,922,493 | 1,630,950 (55.80%) | 1,141,843 (39.08%) | 32,057 (1.09%)       |               |               |               | 13,201 (.45%)   |               | 1,597 (.05%)   | 102,845 (3.52%)  | 1,792,201 | 61.32%    |

**HISTORICAL VOTE BY MAIL (VBM) VOTER REQUESTS  
PRESIDENTIAL AND GUBERNATORIAL PRIMARY AND GENERAL ELECTIONS  
(1950 – 2006)**

| Year | Primary Registration | # VBM Requests | %     | General Registration | # VBM Requests | %     |
|------|----------------------|----------------|-------|----------------------|----------------|-------|
| 1950 | 2,066,393            | 10,745         | 0.52  | 2,198,878            | 24,093         | 1.10  |
| 1952 | 2,253,548            | 24,167         | 1.07  | 2,510,666            | 86,025         | 3.34  |
| 1954 | 2,831,107            | 11,759         | 0.49  | 2,471,814            | 20,972         | 0.85  |
| 1956 | 2,276,763            | 17,630         | 0.77  | 2,683,731            | 65,227         | 2.43  |
| 1958 | 2,578,281            | 16,601         | 0.64  | 2,793,997            | 41,625         | 1.49  |
| 1960 | 2,548,971            | 17,802         | 0.70  | 3,001,379            | 92,508         | 3.08  |
| 1962 | 2,811,130            | 24,755         | 0.83  | 2,979,575            | 55,406         | 1.86  |
| 1964 | 2,701,286            | 36,470         | 1.35  | 3,137,194            | 106,477        | 3.39  |
| 1966 | 2,969,155            | 49,619         | 1.02  | 3,111,516            | 68,314         | 2.20  |
| 1968 | 2,909,410            | 49,888         | 1.71  | 3,130,692            | 110,972        | 3.55  |
| 1970 | 2,922,493            | 29,810         | 1.02  | 3,116,095            | 68,209         | 2.19  |
| 1972 | 3,223,825            | 71,846         | 2.23  | 3,163,450            | 128,365        | 3.55  |
| 1974 | 3,197,078            | 50,817         | 1.59  | 3,286,898            | 67,436         | 2.05  |
| 1976 | 2,077,431            | 75,898         | 3.65  | 3,138,209            | 114,703        | 3.65  |
| 1978 | 2,888,324            | 100,197        | 3.46  | 3,090,768            | 92,991         | 3.00  |
| 1980 | 2,985,492            | 107,414        | 3.59  | 3,262,932            | 155,901        | 4.77  |
| 1982 | 3,070,961            | 94,657         | 3.08  | 3,300,239            | 149,725        | 4.53  |
| 1984 | 3,236,714            | 136,286        | 4.21  | 3,662,766            | 298,847        | 8.16  |
| 1986 | 3,385,207            | 152,440        | 4.50  | 3,543,382            | 230,085        | 6.49  |
| 1988 | 3,416,191            | 193,191        | 5.65  | 3,767,094            | 357,935        | 9.50  |
| 1990 | 3,402,509            | 235,640        | 6.92  | 3,487,180            | 363,894        | 10.43 |
| 1992 | 3,338,914            | 303,981        | 9.10  | 3,744,096            | 452,825        | 12.09 |
| 1994 | 3,550,877            | 260,740        | 7.34  | 3,665,868            | 466,400        | 12.72 |
| 1996 | 3,620,677            | 342,657        | 9.46  | 3,857,805            | 486,116        | 12.60 |
| 1998 | 3,772,593            | 375,257        | 9.95  | 3,854,826            | 506,114        | 13.13 |
| 2000 | 3,808,488            | 414,722        | 10.89 | 4,075,037            | 635,143        | 15.59 |
| 2002 | 4,142,514            | 369,653        | 8.92  | 3,962,831            | 464,856        | 11.73 |
| 2004 | 3,670,157            | 444,751        | 12.12 | 3,972,738            | 816,637        | 20.56 |
| 2006 | 3,826,979            | 552,302        | 14.43 | 3,899,397            | 695,020        | 17.82 |

**HISTORICAL VOTE BY MAIL (VBM) BALLOTS CAST INFORMATION  
PRESIDENTIAL AND GUBERNATORIAL PRIMARY AND GENERAL ELECTIONS  
(1968 - 2008)**

| Year | Primary Ballots Cast | VBM Ballots Cast | % VBM Ballots Cast | Year | General Ballots Cast | VBM Ballots Cast | % VBM Ballots Cast |
|------|----------------------|------------------|--------------------|------|----------------------|------------------|--------------------|
| 1968 | 2,075,661            | 37,951           | 1.83               | 1968 | 2,700,170            | 92,878           | 3.44               |
| 1970 | 1,792,201            | 25,047           | 1.40               | 1970 | 2,352,697            | 56,622           | 2.41               |
| 1972 | 2,210,152            | 57,428           | 2.60               | 1972 | 2,906,597            | 110,613          | 3.81               |
| 1974 | 1,652,878            | 42,703           | 2.58               | 1974 | 2,057,734            | 58,357           | 2.84               |
| 1976 | 1,985,851            | 68,026           | 3.43               | 1976 | 2,544,733            | 87,930           | 3.46               |
| 1978 | 2,140,054            | 88,227           | 4.12               | 1978 | 2,122,733            | 76,086           | 3.58               |
| 1980 | 1,916,660            | 89,019           | 4.64               | 1980 | 2,498,064            | 131,776          | 5.28               |
| 1982 | 1,626,332            | 70,069           | 4.31               | 1982 | 2,301,004            | 122,502          | 5.32               |
| 1984 | 1,595,801            | 98,682           | 6.18               | 1984 | 2,705,966            | 230,997          | 8.54               |
| 1986 | 1,307,146            | 110,223          | 8.43               | 1986 | 2,125,838            | 177,251          | 8.34               |
| 1988 | 1,585,837            | 141,042          | 8.89               | 1988 | 2,733,229            | 279,931          | 10.24              |
| 1990 | 1,283,079            | 177,295          | 13.82              | 1990 | 1,925,811            | 270,645          | 14.05              |
| 1992 | 1,612,673            | 226,310          | 14.03              | 1992 | 2,831,077            | 388,795          | 13.73              |
| 1994 | 1,128,308            | 197,824          | 17.53              | 1994 | 2,147,678            | 372,677          | 17.35              |
| 1996 | 1,346,358            | 257,359          | 19.12              | 1996 | 2,505,790            | 396,033          | 15.80              |
| 1998 | 1,450,126            | 285,532          | 19.69              | 1998 | 2,058,862            | 407,776          | 19.81              |
| 2000 | 1,836,153            | 316,882          | 17.26              | 2000 | 2,769,927            | 543,143          | 19.61              |
| 2002 | 1,070,651            | 218,976          | 20.45              | 2002 | 1,784,320            | 359,682          | 20.16              |
| 2004 | 1,379,747            | 330,353          | 23.94              | 2004 | 3,085,582            | 701,693          | 22.74              |
| 2006 | 1,050,076            | 314,824          | 27.44              | 2006 | 2,033,119            | 531,383          | 26.13              |
| 2008 | Feb 2, 183,998       | 482,921          | 24.09              |      |                      |                  |                    |

## VOTE BY MAIL BALLOT COUNTING - TIMES WHEN COUNTED

The following chart provides the number of vote by mail ballots counted beginning election day and the number processed and updated during the official canvass period.

| MARCH 5, 2002<br>PRIMARY ELECTION |                                   | MARCH 2, 2004<br>PRIMARY ELECTION |                                   | JUNE 6, 2006<br>PRIMARY ELECTION |                                   |
|-----------------------------------|-----------------------------------|-----------------------------------|-----------------------------------|----------------------------------|-----------------------------------|
| DATE                              | # VOTE BY MAIL<br>BALLOTS COUNTED | DATE                              | # VOTE BY MAIL<br>BALLOTS COUNTED | DATE                             | # VOTE BY MAIL<br>BALLOTS COUNTED |
| 3/05                              | 130,145                           | 3/02                              | 252,444                           | 6/06                             | 231,329                           |
| 3/08                              | 62,680                            | 3/05                              | 34,389                            | 6/09                             | 54,136                            |
| 3/12                              | 20,765                            | 3/09                              | 24,476                            | 6/13                             | 24,605                            |
| 3/15                              | 1,179                             | 3/12                              | 14,660                            | 6/16                             | 1,895                             |
| 3/19                              | 1,353                             | 3/16                              | 3,207                             | 6/20                             | 838                               |
| 3/22                              | 2,773                             | 3/19                              | 1,043                             | 6/23                             | 1,888                             |
| 3/26                              | 45                                | 3/26                              | 134                               | 6/27                             | 135                               |
| 3/28                              | 36                                |                                   |                                   |                                  |                                   |
|                                   | <b>218,976</b>                    |                                   | <b>330,353</b>                    |                                  | <b>314,824</b>                    |

## SPEED OF BALLOT COUNTING ELECTION NIGHT – HISTORICAL TRENDS

The following chart provides statistical information on the speed of ballot tabulation from midnight onward.

| MARCH 5, 2002<br>PRIMARY ELECTION |                    |        | MARCH 2, 2004<br>PRIMARY ELECTION |                    |        | JUNE 6, 2006<br>PRIMARY ELECTION |                    |        |
|-----------------------------------|--------------------|--------|-----------------------------------|--------------------|--------|----------------------------------|--------------------|--------|
| TIME                              | BALLOTS<br>COUNTED | %      | TIME                              | BALLOTS<br>COUNTED | %      | TIME                             | BALLOTS<br>COUNTED | %      |
| Midnight                          | 705,082            | 69.93  | Midnight                          | 996,916            | 76.53  | Midnight                         | 720,288            | 69.87  |
| 1:00 am                           | 877,962            | 90.06  | 1:00 am                           | 1,125,494          | 88.25  | 1:00 am                          | 838,773            | 87.11  |
| 2:00 am                           | 950,796            | 98.25  | 2:00 am                           | 1,218,460          | 96.83  | 2:00 am                          | 901,238            | 95.77  |
| 3:00 am                           | 963,034            | 99.86  | 2:52 am                           | 1,251,521          | 100.00 | 2:40 am                          | 925,842            | 99.72  |
| 3:14 am                           | 963,152            | 100.00 |                                   |                    |        | 3:45 am                          | 926,013            | 100.00 |

## PROVISIONAL BALLOTS

The following chart provides the number of provisional ballots received and the number determined eligible and ineligible. Provisional ballots are not opened or counted until the registration information is researched and the voter is determined to be eligible to vote. This research occurs during the days immediately following election day as part of the official vote canvass. Eligible ballots are added to the count during the canvass period.

| ELECTION               | NUMBER OF PROVISIONALS | NUMBER ELIGIBLE | %   | NUMBER INELIGIBLE | %   |
|------------------------|------------------------|-----------------|-----|-------------------|-----|
| 2000 GENERAL           | 100,168                | 61,521          | 61% | 38,647            | 39% |
| 2002 PRIMARY           | 21,006                 | 13,327          | 63% | 7,679             | 37% |
| 2002 GENERAL           | 46,906                 | 32,441          | 70% | 14,465            | 30% |
| 2003 STATEWIDE RECALL  | 121,595                | 106,085         | 87% | 15,510            | 13% |
| *2004 PRIMARY          | 44,232                 | 40,686          | 92% | 3,546             | 8%  |
| 2004 GENERAL           | 204,578                | 166,894         | 82% | 37,684            | 18% |
| 2005 STATEWIDE SPECIAL | 72,726                 | 64,337          | 88% | 8,389             | 11% |
| 2006 PRIMARY           | 39,308                 | 36,501          | 93% | 2,807             | 7%  |
| 2006 GENERAL           | 108,457                | 92,194          | 85% | 16,263            | 15% |
| 2008 PRIMARY           | Feb 176,479            | 153,536         | 87% | 22,943            | 13% |

\*The law changed in January 2003, requiring counting the contests/measures on the provisional ballots that the requested voter was eligible to vote upon. As a result, the number percentage of provisional ballots counted has increased significantly.

## ELECTION COSTS

Listed below are the total costs (including overhead) of conducting major elections in Los Angeles County.

| PRIMARY ELECTIONS |              | GENERAL ELECTIONS |              |
|-------------------|--------------|-------------------|--------------|
| YEAR              | COST         | YEAR              | COST         |
| 1998              | \$12,786,636 | 1998              | \$14,250,919 |
| 2000              | \$15,484,647 | 2000              | \$20,891,000 |
| 2002              | \$22,692,890 | 2002              | \$25,529,188 |
| 2004              | \$23,327,337 | 2004              | \$24,080,984 |
| 2006              | \$27,832,725 | 2006              | \$28,811,229 |
| 2008 (Feb)        | \$30,502,174 | 2008              |              |
| (June)            | N/A          |                   |              |

## PREPARING FOR THE ELECTION

### PRECINCT OFFICERS AND POLLING PLACES

|                   |         |
|-------------------|---------|
| Polling Places    | 4,383   |
| Precinct Officers | 28,000+ |

Polling places will be open from 7:00 a.m. to 8:00 p.m.

**WANTED :** 28,000+ DEDICATED, COMMITTED VOTERS TO WORK FROM 6:30 A.M. UNTIL 9 P.M., OR LATER, ON ELECTION DAY PAY \$80.00. CALL (800) 815-2666, Option #7

**The Challenge** - The June 3, 2008 Statewide Direct Primary Election involves 4,383 polling places which require 25,000+ volunteers to staff them. Although our Polls Section staff swells to 100 at busy election times, the task of recruiting pollworkers and substitutes, and finding poll sites is monumental. Fortunately, we can depend on many experienced pollworkers who have served for decades. However, less than half the pool of experienced pollworkers continue their service from one election to another. The chronic shortage of pollworkers, many of them retirees uncomfortable with new technology, creates an additional training challenge since the department implemented the new InkaVote Plus voting system.

Our Polls Section staff work 10 to 12 hour days during the months leading up to a major countywide election. On Election Day, staff report to work at 5:30 a.m. to begin receiving calls regarding “problem” polls (poll worker cancellations, insufficient supplies, etc.).

**Problem Recruitment Areas** - Recruitment is especially difficult in the Beverly Hills, Canyon Country, Castaic, Encino, Lomita, Los Angeles (90045), Los Angeles (City), Pacific Palisades, Playa Del Rey, Rancho Palos Verde, Santa Monica, Saugus, Sherman Oaks, Valencia, Venice, Winnetka and Woodland Hills. However, new officers are needed in all parts of the County to replenish the pool of retired officers.

**Shortage of Bilingual Pollworkers** - To serve Los Angeles County’s diverse population there is always a need for more bilingual precinct officers, especially those who speak Japanese, Korean and Vietnamese. Our office partners with organizations including CAUSE, the Korean Resource Center, Asian Pacific American Legal Center, Little Tokyo Service Center and the National Association of Latino Elected Officials (NALEO) help to identify and recruit bilingual pollworkers.

**Training and Appreciation.** Our training section conducts approximately 500 interactive training classes throughout the County in the four weeks preceding each major election. Classes for the June 3, 2008 Statewide Direct Primary Election feature the following training videos: “InkaVote Plus”, “Ballot Inspection at the Polls”, and “Perfect Polling Place” which focuses on the basics of the Election Day hour by hour including setting up the polls, processing voters, using the InkaVote system and closing the polls. These training videos enhance the ability and awareness of Pollworkers. Thanks to the partnership with all County libraries, these videos will be available at each reference desk for interested pollworkers who cannot attend training. Copies are provided in the elections supplies picked-up by each precinct Inspector the week before the election. Inspectors are encouraged to contact their precinct board members and share the videos. Copies are also available on the Registrar-Recorder/County Clerk’s website [www.lavote.net](http://www.lavote.net).

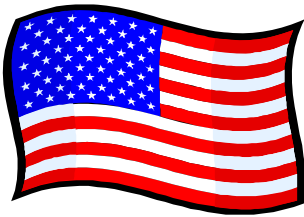
## SAMPLE BALLOT BOOKLET

Unlike most states, California voters have been receiving sample ballot booklets in the mail prior to every election since 1962. Sample ballots provide a mirror image of the ballot and also include candidate statements and other useful information in preparation for voting.

Voters are encouraged to mark their voting choices in their sample ballots prior to going to their poll to speed the voting process.

An application for a Vote by Mail ballot is included on the back cover of each sample ballot booklet. The back cover also lists the voter's poll address and describes, using the universal graphic, whether or not the polling place is accessible for voters in wheelchairs.

## NEW CITIZEN VOTING PROCEDURES



The Registrar-Recorder/County Clerk encourages United States Citizens to register to vote and actively take part in choosing their government representatives by voting for the candidates/issues of their choice.

Persons who became citizens prior to the voter registration deadline and who are at least 18 years old by the next election may complete a registration-by-mail form provided to them after their naturalization swearing-in ceremony and mail or deliver it to the Registrar-Recorder/County Clerk.

Persons who become citizens after the voter registration deadline may register and vote at the Registrar's Office between the 14<sup>th</sup> and 7<sup>th</sup> day before the upcoming election. Such new citizen late registrants must present a Certificate of Naturalization and declare they have established residency in the County.

In compliance with federal law, Los Angeles County prints certain election materials in Chinese, Japanese, Korean, Spanish, Tagalog/Filipino, and Vietnamese. Voters may request multilingual materials by contacting the Registrar's Office before an election at (800) 481-VOTE (8683).

# WHAT'S ON THE BALLOT?

## QUALIFICATIONS AND TERMS OF OFFICE

| <b><u>OFFICE</u></b>  | <b><u>QUALIFICATIONS</u></b>   | <b><u>TERM</u></b>         |
|---|--|----------------------------|
| United States Representative  | 25 years of age or older and a citizen of the United States for at least 7 years and an inhabitant of the state at the time of the general election.         | 2 Years                    |
| State Senate  | A citizen of the United States, a registered voter and otherwise qualified to vote for that office at the time that nomination papers are issued.            | 4 Years                    |
| Member of the State Assembly  | A citizen of the United States, a registered voter and otherwise qualified to vote for that office at the time that nomination papers are issued.            | 2 Years                    |
| County Central Committee<br>Democratic/<br>Republican/<br>American Independent<br>Parties | A registered voter at the time nomination papers are issued and resident of the Assembly District.   | Subject to Party<br>Bylaws |
| Central Committee<br>Peace and Freedom<br>Party   | A registered voter at the time nomination papers are issued and resident of the Assembly District.   | Subject to Party<br>Bylaws |
| County Council<br>Green Party   | A registered voter at the time nomination papers are issued and resident of the Supervisorial District.  | Subject to Party<br>Bylaws |
| Member, Board of Supervisors  | A registered voter of the district for at least 30 days prior to deadline to file nomination documents.  | 4 Years                    |
| District Attorney   | A registered voter of the jurisdiction at the time nomination documents are issued. Must have been admitted to practice before the California Supreme Court. | 4 Years                    |
| Judge of the Superior Court   | Must have been a member of the State Bar or served as a judge of a court of record in the State 10 years immediately preceding selection to Superior Court.  | 6 Years                    |



## VOTES REQUIRED

### Partisan Offices

The candidate from each party receiving the highest number of votes at a primary election is the nominee for the general election. The candidate receiving the highest number of votes in a General Election is elected to fill the office.

(Elec. Code Sec. 15451)

### Non-Partisan Offices (County and Judicial)

A majority of votes cast (50 percent plus one vote) is required to elect a candidate in a primary election. When a candidate is elected in the primary election, the office shall not appear on the ballot for the general election. If no candidate receives a majority of votes cast, the two candidates receiving the highest number of votes are placed on the ballot for a runoff in the general election.

(Elec. Code Sec. 8140 & 8141)

### County Central Committees, County Council and some Non-Partisan Offices (City and Miscellaneous Districts)

The candidate receiving the highest number of votes is elected to the office. If two or more candidates are to be elected, those candidates equal in number to the number to be elected, receiving the highest number of votes, are elected.

(Elec. Code Sec. 8144, 10551 & 10600)

### Write-in Candidates For Partisan Office

To appear on the ballot for the general election, a qualified write-in candidate must receive the highest number of votes at the primary election for that office and receive not less than 1% of the votes cast for the office at the last preceding general election in which the office was filled.

(Elec. Code Sec. 8605)

## SUMMARY OF MEASURES, CANDIDATES AND OFFICES ON THE BALLOT

Contests in the June 3, 2008 Statewide Direct Primary Election being conducted by the Los Angeles County Registrar-Recorder/County Clerk's Office include the federal government, state government, two Cities, seventeen Judicial District, and four School Districts.

The following chart summarizes the number of measures, candidates and offices involved in this election:

| <b>JURISDICTION</b> | <b>NUMBER OF MEASURES</b> | <b>CANDIDATES FOR ELECTION</b> | <b>NUMBER OF OFFICES</b> |
|---------------------|---------------------------|--------------------------------|--------------------------|
| Federal             | 0                         | 47                             | 19                       |
| State               | 2                         | 103                            | 31                       |
| County              | 0                         | 426                            | 42                       |
| 2 Cities            | 2                         | 0                              | 0                        |
| Judicial District   | 0                         | 36                             | 17                       |
| 4 School Districts  | 4                         | 0                              | 0                        |
| <b>TOTAL</b>        | <b>8</b>                  | <b>612</b>                     | <b>109</b>               |

## SUMMARY OF PARTISAN CANDIDATES ON BALLOT

### NUMBER OF CANDIDATES

| OFFICE                           | DEM | REP | AI | GRN | LIB | P/F | TOTAL |
|----------------------------------|-----|-----|----|-----|-----|-----|-------|
| United States Representative     | 25  | 15  | 0  | 1   | 6   | 0   | 47    |
| State Senator                    | 11  | 9   | 0  | 0   | 3   | 0   | 23    |
| Member of the State Assembly     | 42  | 30  | 0  | 1   | 6   | 1   | 80    |
| County Central Committee         | 243 | 150 | 0  | 0   | 0   | 0   | 393   |
| Central Committee                | 0   | 0   | 0  | 0   | 0   | 8   | 8     |
| County Council                   | 0   | 0   | 0  | 8   | 0   | 0   | 8     |
| Total Number Partisan Candidates | 321 | 204 | 0  | 10  | 15  | 9   | 559   |

## CANDIDATES, VOTING PRECINCTS, AND REGISTRATION BY PARTISAN OFFICE

| <u>OFFICE</u>                | <u>CANDIDATES</u> | <u>VOTING<br/>PRECINCTS</u> | <u>REGISTRATION*</u> |
|------------------------------|-------------------|-----------------------------|----------------------|
| United States Representative |                   |                             |                      |
| <u>District #</u>            |                   |                             |                      |
| 22                           | 1                 | 35                          | 33,880               |
| 25                           | 2                 | 278                         | 233,175              |
| 26                           | 5                 | 237                         | 214,317              |
| 27                           | 3                 | 279                         | 274,867              |
| 28                           | 1                 | 250                         | 224,475              |
| 29                           | 3                 | 308                         | 287,208              |
| 30                           | 1                 | 420                         | 386,182              |
| 31                           | 1                 | 201                         | 173,887              |
| 32                           | 1                 | 255                         | 223,707              |
| 33                           | 4                 | 289                         | 276,741              |
| 34                           | 3                 | 204                         | 181,158              |
| 35                           | 3                 | 268                         | 236,504              |
| 36                           | 2                 | 353                         | 314,065              |
| 37                           | 3                 | 296                         | 252,316              |
| 38                           | 2                 | 247                         | 230,708              |
| 39                           | 2                 | 285                         | 242,757              |
| 42                           | 4                 | 64                          | 64,126               |
| 46                           | 6                 | 114                         | 106,438              |

| <u>OFFICE</u>                | <u>CANDIDATES</u> | <u>VOTING<br/>PRECINCTS</u> | <u>REGISTRATION*</u> |
|------------------------------|-------------------|-----------------------------|----------------------|
| State Senate                 |                   |                             |                      |
| <u>District #</u>            |                   |                             |                      |
| 17                           | 2                 | 328                         | 287,967              |
| 19                           | 2                 | 41                          | 35,104               |
| 21                           | 3                 | 449                         | 406,818              |
| 23                           | 5                 | 428                         | 390,820              |
| 25                           | 5                 | 391                         | 340,543              |
| 27                           | 2                 | 397                         | 349,444              |
| 29                           | 4                 | 264                         | 248,490              |
| Member of the State Assembly |                   |                             |                      |
| <u>District #</u>            |                   |                             |                      |
| 36                           | 5                 | 150                         | 132,288              |
| 37                           | 3                 | 44                          | 36,157               |
| 38                           | 2                 | 223                         | 198,895              |
| 39                           | 4                 | 118                         | 113,656              |
| 40                           | 7                 | 164                         | 166,995              |
| 41                           | 2                 | 205                         | 183,551              |
| 42                           | 2                 | 275                         | 247,995              |
| 43                           | 2                 | 195                         | 184,464              |
| 44                           | 3                 | 244                         | 215,666              |
| 45                           | 2                 | 148                         | 128,328              |
| 46                           | 5                 | 106                         | 95,434               |
| 47                           | 2                 | 214                         | 208,805              |
| 48                           | 2                 | 138                         | 130,664              |
| 49                           | 2                 | 170                         | 145,402              |
| 50                           | 1                 | 143                         | 122,957              |
| 51                           | 3                 | 194                         | 162,392              |
| 52                           | 5                 | 149                         | 129,386              |
| 53                           | 2                 | 265                         | 238,594              |
| 54                           | 5                 | 240                         | 218,938              |
| 55                           | 2                 | 209                         | 169,413              |
| 56                           | 2                 | 157                         | 139,002              |
| 57                           | 2                 | 177                         | 158,191              |
| 58                           | 2                 | 191                         | 172,209              |
| 59                           | 3                 | 127                         | 120,968              |
| 60                           | 3                 | 92                          | 91,537               |
| 61                           | 7                 | 45                          | 44,624               |

\*Figure as of April 4, 2008.

## SUMMARY OF NON-PARTISAN CANDIDATES ON BALLOT

| OFFICE                       | NUMBER OF CANDIDATES |
|------------------------------|----------------------|
| Member, Board of Supervisors | 14                   |
| District Attorney            | 3                    |
| Superior Court Judges        | 36                   |

## CANDIDATES, VOTING PRECINCTS, AND REGISTRATION BY NON-PARTISAN OFFICE

| <u>OFFICE</u>                | <u>CANDIDATES</u> | <u>VOTING<br/>PRECINCTS</u> | <u>REGISTRATION*</u> |
|------------------------------|-------------------|-----------------------------|----------------------|
| Member, Board of Supervisors |                   |                             |                      |
| <u>District #</u>            |                   |                             |                      |
| 2                            | 9                 | 786                         | 460,325              |
| 4                            | 3                 | 955                         | 382,080              |
| 5                            | 2                 | 1,048                       | 946,085              |
| District Attorney            | 3                 | 4,383                       | 3,956,511            |
| Judge of the Superior Court  |                   |                             |                      |
| <u>Office#</u>               |                   |                             |                      |
| 3                            | 1                 | 4,383                       | 3,956,511            |
| 4                            | 2                 | 4,383                       | 3,956,511            |
| 35                           | 1                 | 4,383                       | 3,956,511            |
| 41                           | 1                 | 4,383                       | 3,956,511            |
| 55                           | 1                 | 4,383                       | 3,956,511            |
| 69                           | 2                 | 4,383                       | 3,956,511            |
| 72                           | 3                 | 4,383                       | 3,956,511            |
| 82                           | 3                 | 4,383                       | 3,956,511            |
| 84                           | 4                 | 4,383                       | 3,956,511            |
| 94                           | 3                 | 4,383                       | 3,956,511            |
| 95                           | 2                 | 4,383                       | 3,956,511            |
| 101                          | 1                 | 4,383                       | 3,956,511            |
| 102                          | 1                 | 4,383                       | 3,956,511            |
| 119                          | 3                 | 4,383                       | 3,956,511            |
| 123                          | 3                 | 4,383                       | 3,956,511            |
| 125                          | 2                 | 4,383                       | 3,956,511            |
| 154                          | 3                 | 4,383                       | 3,956,511            |

\*Figure as of April 4, 2008.

## ROTATION OF NAMES

As required by state law, names of candidates for certain offices are rotated on the ballot as follows:

| <b>OFFICE</b>                              | <b>ROTATION</b>  |
|--|--|
| United States Representative               | Name of candidates are arranged in accordance with the alphabetical drawing beginning with the lowest numbered Assembly District in the Congressional or Board of Equalization District. Thereafter, for each succeeding Assembly District, the candidate's name appearing first is placed last; the order of the other names remains unchanged. |
| Superior Court Judge and District Attorney | Name of candidates are arranged in accordance with the alphabetical drawing beginning with the lowest numbered Assembly District in the County. Thereafter, for each succeeding Assembly District, the candidate's name appearing first is placed last; the order of the other names remains unchanged.  |
| Other Offices                              | No rotation.   |

## PLACEMENT AND ROTATION OF CANDIDATES' NAMES ON BALLOT

### Placement of Names

The placement of names on the ballot is determined by a random alphabetical drawing which was held by the Secretary of State and Registrar-Recorder/County Clerk on March 13, 2008.

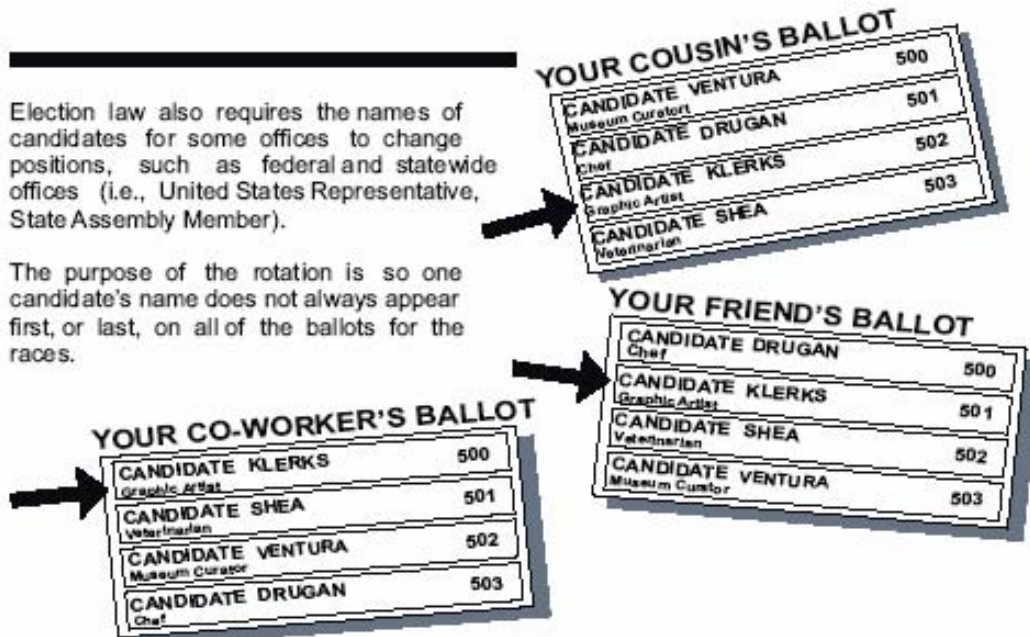
### "WHO'S ON FIRST?" (CANDIDATE ORDER)



The order in which candidates' names appear on the ballot is determined by a random drawing of the 26 letters of the alphabet. This random ("pulled out of a hat") alphabetical drawing is conducted by the Secretary of State and the Registrar-Recorder/County Clerk prior to each election.

#### YOUR BALLOT

|                           |     |
|---------------------------|-----|
| CANDIDATE <b>S</b> HEA    | 500 |
| Veterinarian              |     |
| CANDIDATE <b>V</b> ENTURA | 501 |
| Museum Curator            |     |
| CANDIDATE <b>D</b> RUGAN  | 502 |
| Chef                      |     |
| CANDIDATE <b>K</b> LERKS  | 503 |
| Graphic Artist            |     |



**MEASURES APPEARING ON BALLOT****VOTES  
REQUIRED****STATE MEASURES** (Registration: 3,956,511\*)

- 98 Eminent Domain. Limits on Government Authority. Initiative Constitutional Amendment.** MAJORITY
- Bars state and local governments from condemning or damaging private property for private uses. Prohibits rent control and similar measures. Prohibits deference to government in property rights cases. Defines “just compensation.” Requires an award of attorneys’ fees and costs if a property owner obtains a judgment for more than the amount offered by the government. Requires government to offer to original owner of condemned property the right to repurchase property at condemned price when property is put to substantially different use than was publicly stated. Summary of estimate by Legislative Analyst and Director of Finance of fiscal impact on state and local government: Increased costs to many governments due to the measure’s restrictions. The fiscal effect on most governments probably would not be significant.
- 99 Eminent Domain. Limits on Government Acquisition of Owner-Occupied Residence. Initiative Constitutional Amendment.** MAJORITY
- Bars state and local governments from using eminent domain to acquire an owner-occupied residence, as defined, for conveyance to a private person or business entity. Creates exceptions for public work or improvement, public health and safety protection, and crime prevention. Summary of estimate by Legislative Analyst and Director of Finance of fiscal impact on state and local government: The measure would likely not have a significant fiscal impact on state or local governments.

\*Figure as of April 4, 2008.



**MEASURES APPEARING ON BALLOT**

**VOTES  
REQUIRED**

**LOCAL MEASURES**

**CENTINELA VALLEY UNION HIGH SCHOOL DISTRICT** (Registration: 49,612\*)

**A**

To attract and retain qualified teachers; reduce class size; maintain libraries; upgrade computer and science labs; improve academics including music, arts, math, science, English, and other courses students need to qualify for college admission; and improve school safety/security; shall the Centinela Valley Union High School District levy an education parcel tax at \$0.04 per square foot for nine years, exempting seniors, with no money used for administrative costs and an independent citizen’s oversight committee to audit use of funds?

**2/3 OF  
VOTES  
CAST**

**COVINA CITY** (Registration: 21,563\*)

**C**

Shall the City of Covina extend for only 10 years its existing 6% Utility Users Tax, with no rate increase, requiring annual financial audits, and ensuring all funds collected remain in Covina, to continue funding vital city services including: police, fire and paramedic services; street and lighting maintenance; and services for senior citizens, the library, and parks and recreation program?

**MAJORITY**

**HAWTHORNE SCHOOL DISTRICT** (Registration: 12,198\*)

**H**

Shall the Hawthorne School District be authorized to issue \$20,000,000 in bonds at legal interest rates to acquire, construct, and improve local schools, including security improvements throughout the District to reduce vandalism, additional classrooms and athletic fields at the charter high school, and gymnasiums for student and community use, with a citizens’ oversight committee, annual audits, and NO money for salaries, administration, and overhead?

**55% OF  
VOTES  
CAST**

**HERMOSA BEACH CITY SCHOOL DISTRICT** (Registration: 12,185\*)

**E**

**Improving Educational Opportunities.** To maintain high quality education for Hermosa’s schools, support classroom instruction, maintain and create small class sizes, and preserve educational programs, shall Hermosa Beach City School District levy a parcel tax for Two Hundred Fifty-Seven Dollars (\$257) per assessor parcel per year, not to exceed a 5% annual increase, for five (5) years, with exemptions available for seniors and disabled persons, a citizens’ oversight committee, accountability measures and all funds being used locally?

**2/3 OF  
VOTES  
CAST**

\*Figure as of April 4, 2008.

**LOCAL MEASURES**

**VOTES  
REQUIRED**

**LOS NIETOS SCHOOL DISTRICT** (Registration: 6,268\*)

**M**

To acquire, construct and modernize school facilities, shall the Los Nietos School District be authorized to upgrade classrooms and security, improve student safety and school sites, renovate outdated restrooms, and replace roofs by issuing up to \$31,140,000 in bonds at legal interest rates, with annual audits, a citizens' oversight and no money for overhead or administrator salaries?

55% OF  
VOTES  
CAST

**SOUTH GATE CITY** (Registration: 28,024\*)

**P**

**The South Gate Vital City Services Measure.** To preserve public safety and prevent significant cuts to City services, by funding general City services such as hiring additional police officers, maintaining youth anti-gang and anti-drug programs, after-school parks and recreation services, graffiti removal, maintaining neighborhood parks, fixing potholes and City streets, and other essential City services, shall the City sales tax be increased by one cent with guaranteed independent annual financial audits, expenditure reports, and citizens' financial oversight?

MAJORITY

**TORRANCE CITY** (Registration: 73,040\*)

**T**

Shall an ordinance be adopted to ratify and update Torrance's existing telephone utility users' tax, to continue to maintain such essential city services as police, fire, street repair, parks, libraries, recreation programs and other services that are presently paid for from the city's general fund; provided that the present tax rate will not change; low-income seniors and disabled persons will remain exempt; and independent annual audits will be required?

MAJORITY

\*Figure as of April 4, 2008.

## ELECTION DAY/NIGHT

### SPEED OF BALLOT COUNTING ELECTION NIGHT - HISTORICAL TRENDS

DO NOT EXPECT very many ballots to be counted before 11:00 p.m. Results of early vote by mail ballots will be available by 8:30 p.m.; however, most precinct ballots do not begin to arrive at the Tally Center in Norwalk until 10:30 - 11:00 p.m. Upon arrival, there are many check-in steps prior to tabulation (see "How do the ballots get to Norwalk?").

Los Angeles County tabulates the vote using a central count system. There is no tabulation at the voting locations.

Historically for Countywide primary elections, approximately 50% of the ballots are counted by midnight on election night. The following chart provides statistical information on the speed of ballot tabulation from midnight onward. We realize that media deadlines are often prior to midnight; however, we cannot count ballots until they physically arrive in Norwalk.

| MARCH 5, 2002<br>PRIMARY ELECTION |                    |        | MARCH 2, 2004<br>PRIMARY ELECTION |                    |        | JUNE 6, 2006<br>PRIMARY ELECTION |                    |        |
|-----------------------------------|--------------------|--------|-----------------------------------|--------------------|--------|----------------------------------|--------------------|--------|
| TIME                              | BALLOTS<br>COUNTED | %      | TIME                              | BALLOTS<br>COUNTED | %      | TIME                             | BALLOTS<br>COUNTED | %      |
| Midnight                          | 705,082            | 69.93  | Midnight                          | 996,916            | 76.53  | Midnight                         | 720,288            | 69.87  |
| 1:00 am                           | 877,962            | 90.06  | 1:00 am                           | 1,125,494          | 88.25  | 1:00 am                          | 838,773            | 87.11  |
| 2:00 am                           | 950,796            | 98.25  | 2:00 am                           | 1,218,460          | 96.83  | 2:00 am                          | 901,238            | 95.77  |
| 3:00 am                           | 963,034            | 99.86  | 2:52 am                           | 1,251,521          | 100.00 | 2:40 am                          | 925,842            | 99.72  |
| 3:14 am                           | 963,152            | 100.00 |                                   |                    |        | 3:45 am                          | 926,013            | 100.00 |

### VOTE BY MAIL BALLOT COUNTING - TIMES WHEN COUNTED

The following chart provides the number of vote by mail ballots counted beginning election day and the number processed and updated during the official canvass period.

| MARCH 5, 2002<br>PRIMARY ELECTION |                                   | MARCH 2, 2004<br>PRIMARY ELECTION |                                   | JUNE 6, 2006<br>PRIMARY ELECTION |                                   |
|-----------------------------------|-----------------------------------|-----------------------------------|-----------------------------------|----------------------------------|-----------------------------------|
| DATE                              | # VOTE BY MAIL<br>BALLOTS COUNTED | DATE                              | # VOTE BY MAIL<br>BALLOTS COUNTED | DATE                             | # VOTE BY MAIL<br>BALLOTS COUNTED |
| 3/05                              | 130,145                           | 3/02                              | 252,444                           | 6/06                             | 231,329                           |
| 3/08                              | 62,680                            | 3/05                              | 34,389                            | 6/09                             | 54,136                            |
| 3/12                              | 20,765                            | 3/09                              | 24,476                            | 6/13                             | 24,605                            |
| 3/15                              | 1,179                             | 3/12                              | 14,660                            | 6/16                             | 1,895                             |
| 3/19                              | 1,353                             | 3/16                              | 3,207                             | 6/20                             | 838                               |
| 3/22                              | 2,773                             | 3/19                              | 1,043                             | 6/23                             | 1,888                             |
| 3/26                              | 45                                | 3/26                              | 134                               | 6/27                             | 135                               |
| 3/28                              | 36                                |                                   |                                   |                                  |                                   |
|                                   | <b>218,976</b>                    |                                   | <b>330,353</b>                    |                                  | <b>314,824</b>                    |

## ELECTION DAY/NIGHT

## HOW DO THE BALLOTS GET TO NORWALK?

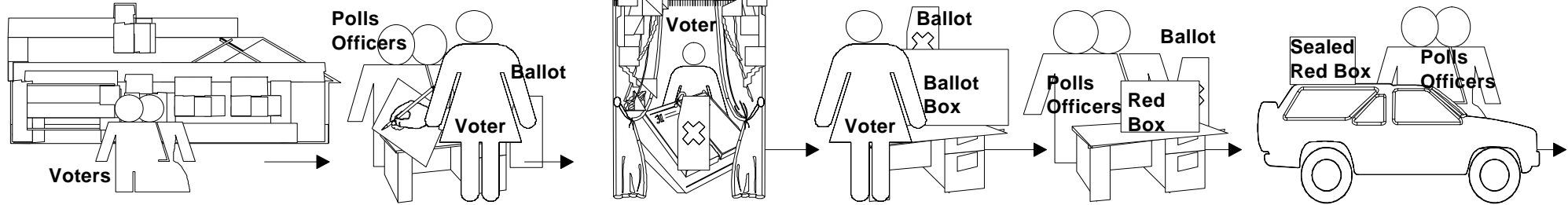
On election night, ballots from all 4,379 voting precincts are brought to the Registrar-Recorder/County Clerk's headquarters in Norwalk for tabulation.

- After the polls close at 8:00 p.m., the precinct officials must complete the paperwork to balance the number of ballots cast with the number of voters signing in and account for the number of remaining unvoted ballots. Most precincts complete this function between 9:00-9:30 p.m.
- Then precinct officials from the 4,379 precincts bring their ballots and supplies to one of 69 designated check-in centers located throughout the County, usually arriving between 9:30 - 10:30 p.m.
- Sheriff deputies transport the voted ballots from the check-in-centers, via helicopter or by car, to Norwalk. Ballots come in from as far away as Lancaster, Palmdale and Catalina Island.
- Between 10:30 - 11:30 p.m. a large number of ballots begin to arrive at RR/CC headquarters (we expect over 1 million ballots).
- Prior to tabulation, all ballots must be checked-in, taken out of boxes, inspected and prepared for counting.
- Ballots are moved into the tabulation center in a continuous flow. There operators load the ballot cards onto card readers.
- There are 18 counting stations, each with two card readers, for a total of 36 card readers.
- Because there is no specific order of processing/counting, ballots from locations closer to Norwalk are co-mingled with ballots from more distant destinations. Therefore, ballots from locations close to Norwalk are not necessarily counted first.

Thousands of dedicated individuals are involved in ballot transport, preparation and tabulation. Los Angeles County is the largest county electoral jurisdiction in the U.S. We count the most ballots by far on election night!

# Voting And Ballot Processing Flow Chart

## POLLING PLACE



Enter Polling Place

Sign Index Roster and Receive Ballot

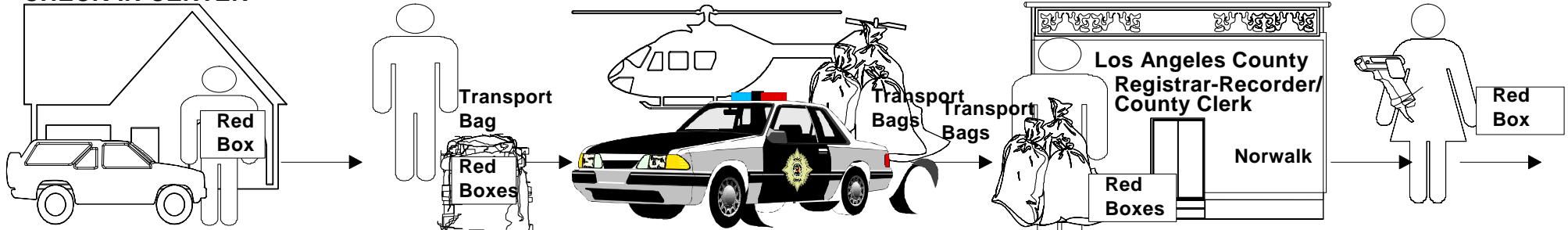
Cast Ballot

Place Ballot in Ballot Box

Prepare Ballot Statement Seal Ballots in Red Box

Transport Sealed Red Box to Check-In Center

## CHECK-IN CENTER



Receive and Inspect Red Box

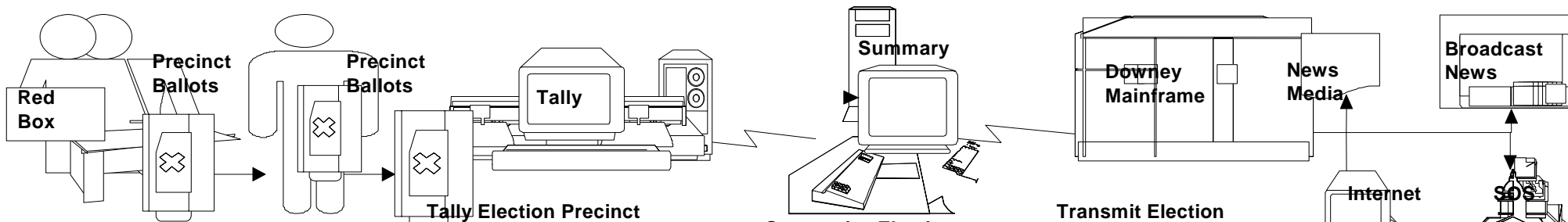
Place Red Boxes in Bag and Seal

Sheriff Transports Bags to Tally Center

Receive Bags and Remove Red Boxes

Inspect and Scan Red Boxes

## TALLY CENTER



Remove and Inspect Ballots and Prepare for Processing

Transport Ballots to Tally Computers

Tally Election Precinct and Transmit Precinct Summaries to the Summary Computer

Summarize Election Precinct and Transmit Results to the Media

Transmit Election Results to the Public and Media



COUNTY OF LOS ANGELES

## REGISTRAR-RECORDER/COUNTY CLERK

12400 IMPERIAL HWY. – P.O. BOX 1024, NORWALK, CALIFORNIA 90651-1024 - [www.lavote.net](http://www.lavote.net)

**DEAN C. LOGAN**

Acting Registrar-Recorder/County Clerk

May 27, 2008

TO: All Campaigns and Political Parties – June 3, 2008 Statewide Direct Primary Election

FROM: Dean C. Logan, Acting Registrar-Recorder/County Clerk

### **INCOMPLETE BALLOT COUNTING ON ELECTION NIGHT**

Campaigns and political parties are frequently surprised on the day after a major election when they learn that there are several hundred thousand ballots countywide remaining to be counted. Statewide, typically 5% of ballots cast are not able to be included in the election night tally. This memo explains the logistics of election night ballot counting and follow-up ballot tabulation that occurs in the days/weeks following the election. State law requires each election jurisdiction to complete an official audit called a “canvass” no more than 28 days after the election. When the canvass is completed, the Secretary of State certifies the results.

There are three categories of ballots which cannot be processed on Election Night:

- Vote by Mail ballots (those turned in at voting locations and those received by mail shortly before or on Election Day)
- Provisional ballots voted at the polls
- Write-in ballots

NOTE: All valid ballots in the above categories are counted prior to official results certification.

### **VOTE BY MAIL BALLOTS TURNED IN AT POLLING LOCATIONS**

Many vote by mail voters wait until the last minute to make their voting choices and then drop off their ballots at a polling place or at RR/CC headquarters on Election Day. We receive these ballots very late on election night. All vote by mail ballots must be pre-processed before they are counted. We must verify every vote by mail voter’s signature prior to opening the vote by mail ballot envelopes to remove the ballots in preparation for counting.

### **PROVISIONAL BALLOTS**

Provisional ballots are issued at the polls when a voter’s registration is in question, or when our records indicate the voter was already sent a vote by mail ballot. Provisional ballots are sealed in special envelopes at the polls and must be individually researched and verified at the Registrar-Recorder/County Clerk’s Office before ballots are counted or rejected in accordance with election laws.

## WRITE-IN BALLOTS

When a voter chooses to vote for a write-in candidate whose name is not printed on the ballot, that ballot cannot be counted on election night. Each ballot containing a write-in vote must be individually reviewed to determine whether or not the write-in vote is for a qualified write-in candidate and whether or not the voter overvoted (i.e. voted for a candidate on the ballot and also voted for a write-in candidate for the same office). When an overvote occurs, neither vote can be counted for that one office, although the rest of the ballot selections will be counted. Due to the individual scrutiny involved, no portion of any ballot containing a write-in vote is counted on election night. **(Vote tallies for write-in candidates are not available until the conclusion of the official canvass because each ballot containing a write-in vote must be set aside for manual review.)**

## SUMMARY

Supplemental ballot counting of vote by mail, provisional and write-in ballots occurs in sequential order after the election but before certification of official results (i.e. all Vote by Mail ballots must be verified and cleared prior to verifying provisional ballots in order to ensure there are no duplicates among these categories). These ballots are not segregated by district prior to counting. Therefore, the number of outstanding ballots for any specific electoral district will be unknown until the voting system tallies these ballots. Our staff will be working overtime to prepare all outstanding ballots for tabulation.

California law requires election authorities complete and certify its results with 28 days. This provision of the law recognizes the complexity of completing the ballot count and conducting a thorough audit of the election results to ensure accuracy. Part of the canvass process is a legally required manual recount of the votes cast for all candidates and measures on the ballots in 1% of the 4,383 voting precincts. This manual process verifies the accuracy of the computer count.

Supplemental ballot counting takes place at 2 p.m. every Friday and Tuesday throughout the canvass period. Therefore, the first supplemental count will be held on Friday, June 6<sup>th</sup> at 2:00 p.m. We anticipate the majority of the outstanding vote by mail ballots will be included by the Tuesday, June 10<sup>th</sup> update. However, due to the extra research required to validate provisional ballots, these ballots are usually the last to be tallied prior to the completion of the official canvass (which must be completed by July 1<sup>st</sup>, 2008).

Candidates and the public are invited to observe supplemental ballot counting and the manual tally of ballots from the randomly selected 1% of the voting precincts. After election night, the schedule of supplemental ballot counting will also be posted on the entrance door of our office in Norwalk and on our website [www.lavote.net](http://www.lavote.net).

We realize it is difficult for candidates/campaigns involved in close races to wait and know the results of the election. The legally mandated processes described above are utilized to ensure that every vote is counted and included in the official final election returns. This issue paper clarifies the reasons for the time required to finalize the ballot tally prior to the official certification of election results.

## HOW TO READ ELECTION RESULTS BULLETIN

Election Results Bulletins contain vote tallies for candidates and measures and also the number of precincts, registered voters, and total ballots cast within Los Angeles County. Therefore, only partial results are available for statewide political offices and for those districts that overlap neighboring counties. The first bulletin produced election night contains Vote by Mail ballot results and will be available at approximately 8:30 p.m. After the initial precinct bulletin and as ballots are processed, semi-official results will be available approximately every 60 minutes until all precincts have reported. *Election results will also be continuously updated and displayed on the Internet election night at:*

[www.lavote.net](http://www.lavote.net) AND [www.sos.ca.gov](http://www.sos.ca.gov)

The following is intended to assist you in understanding the statistical information provided on the front page of the Election Results Bulletin. Listed below are two sample bulletins from the 2004 Primary Election.

| <u>ELECTION RESULTS<br/>BULLETIN (A)</u>   |                 |                | <u>ELECTION RESULTS<br/>BULLETIN (A)</u>   |                  |                 |
|--|-----------------|----------------|--|------------------|-----------------|
|  |                 | <b>8:00 PM</b> |  |                  | <b>10:40 PM</b> |
| TOTAL PRECINCTS  | 4,571           |                | TOTAL PRECINCTS  | 4,571            |                 |
| PRECINCTS REPORTING  | 0    0.00       |                | PRECINCTS REPORTING  | 1,085    23.74   |                 |
| TOTAL REGISTRATION (B)   | 8,554           |                | TOTAL REGISTRATION (B)   | 845,261          |                 |
| ABSENTEE TOTAL (C)   | 252,444         |                | ABSENTEE TOTAL (C)   | 252,444          |                 |
| (D) BALLOTS CAST/<br>TURNOUT (E)   | 252,444    0.00 |                | (D) BALLOTS CAST/<br>TURNOUT (E)   | 456,647    54.02 |                 |
| <p>(A) A sample of the <b>FIRST BULLETIN</b> which reflects absentee ballots pre-processed for tabulation by 8:00 p.m. and early touchscreen voting results.</p> <p>(B) Reflects registration only for declared absentee voter precincts which are precincts that due to their remote location and sparse population may only vote by absentee ballot.</p> <p>(C) Reflects registration only for declared absentee voter precincts which are precincts that due to their remote location and sparse population may only vote by absentee ballot.</p> <p>(D) Reflects the total ballots cast (521,004).</p> <p>(E) No turnout is provided because the program is designed to suppress reporting this information until registration exceeds ballots cast.</p> |                 |                | <p>(A) A sample of the <b>PRECINCT</b> results bulletin where voter turnout is displayed.</p> <p>(B) Bulletin reflects election results for absentee ballots and early touchscreen voting plus 724 or 15.73% of the total election precincts 4,602.</p> <p>(C) Reflects total registration (1,404,562) for declared absentee voter precincts plus the 724 election precincts that have been processed.</p> <p>(D) Reflects total ballots cast (836,988) of which 521,004 are absentee ballots and early touchscreen voting results.</p> <p>(E) Reflects a voter turnout of 21.06%. However, this number is skewed because of the 521,004 absentee ballots and early touchscreen voting results reported on the first elections results bulletin with no accompanying registration except for declared absent voter precincts. The voter turnout skewing decreases as ballots are delivered and tabulated from the precincts until all have reported.</p> |                  |                 |



## WRAPPING UP THE ELECTION/CANVASS

### WHAT IS THE VOTE CANVASS?

The election canvass process is an internal audit and is required by state law to ensure the accuracy of election results. California election law allows 28 days for the conduct of the official canvass of final election results. The canvass begins on Thursday, June 5th and will be concluded no later than Tuesday, July 1st. All aspects of the canvass are open for public observation. During the canvass, vote by mail and provisional ballots not counted on election night are researched to validate eligibility. Once validated, these additional votes by mail and provisional ballots will be counted beginning on June 6th and every Tuesday and Friday thereafter until completed. The canvass concludes with the certification and issuance of official election results. Listed below are the major components of the official canvass.

### AUDIT

**Roster Reconciliation** - Following the close of the polls election night, precinct officers are responsible for completing the Official Ballot Statement shown below which is located on the front cover of each precinct's roster of voters.

#### OFFICIAL BALLOTS STATEMENT

|   |               |
|---|---------------|
| 1. TOTAL BALLOTS RECEIVED                                   | 1. <u>400</u> |
| 2. NUMBER OF VOIDED BALLOTS                                 | 2. <u>0</u>   |
| 3. NUMBER OF UNUSED BALLOTS                                 | 3. <u>306</u> |
| 4. NUMBER OF VOTED BALLOTS                                  | 4. <u>94</u>  |
| 5. NUMBER OF PROVISIONALLY VOTED BALLOTS                    | 5. <u>0</u>   |
| 6. TOTAL (add 2+ 3 + 4 + 5)<br>- SHOULD AGREE WITH #1       | 6. <u>400</u> |
| 7. NUMBER OF Audio BALLOTS                                  | 7. <u>50</u>  |
| 8. TOTAL (add 4 + 7)  | 8. <u>144</u> |
| 9. NUMBER OF SIGNATURES IN ROSTER<br>- SHOULD AGREE WITH #8 | 9. <u>144</u> |

As part of the official canvass, the number of signatures indicated by the inspector on the roster is compared to the number of ballots tabulated by the computer tally system.

**1% Manual Vote Tally** - All voted ballots from a randomly selected 1% of the 4,383 precincts are manually tallied and balanced against the computer counts to verify the accuracy of the election tally system. This process is required by law.

### **BALLOTS ADDED DURING OFFICIAL CANVASS**

The following ballots are withheld from the tally system on election night. Once eligibility is determined, these ballots are added to the election results. Withheld ballot types include:

- Vote by Mail Ballots returned on election day to our office and dropped off at polling locations. These ballots do not arrive in sufficient time to be individually signature-verified, opened and prepared for tabulation on election night.

- Damaged Ballots that are unable to be processed through the election tally system and, therefore, must be manually duplicated prior to tabulation.
- Write-In Ballots must be individually reviewed to determine if the write-in vote is for a qualified/unqualified write-in candidate and whether or not the voter also voted for a candidate listed on the ballot for the same office (i.e. overvoted the ballot).
- Provisional Ballots issued at the 4,383 voting locations on Election Day. These ballots must be individually researched to determine eligibility. Provisional ballots are issued at polling locations when a person's voter registration cannot immediately be authenticated.

In the June 6, 2006 Gubernatorial Primary Election, approximately 351,224 provisional, vote by mail and damaged ballots remained to be processed after election night.

## **CANVASS SCHEDULE**

The following provides the canvass schedule of events for supplemental ballot counting.

**JUNE 3, 2008  
PRIMARY STATEWIDE DIRECT ELECTION  
SCHEDULED TALLY UPDATES**

- Friday, June 6th - 2:00 p.m.  
1<sup>st</sup> Ballot Counting Update
- Tuesday, June 10th - 2:00 p.m.  
2<sup>nd</sup> Ballot Counting Update
- Friday, June 13th - 2:00 p.m.  
3<sup>rd</sup> Ballot Counting Update
- Tuesday, June 17th - 2:00 p.m.  
4<sup>th</sup> Ballot Counting Update
- Friday, June 20th - 2:00 p.m.  
5<sup>th</sup> Ballot Counting Update
- Monday, June 23rd - 2:00 p.m.  
6<sup>th</sup> Ballot Counting Update
- Wednesday, June 25th - 2:00 p.m.  
(If needed).
- Friday, June 27th - 10:00 a.m.  
(If needed).

Board of Supervisors declares official results Tuesday, July 1, 2008.

# REQUESTING



# A RECOUNT

## JUNE 2008

A recount is conducted by the elections official for the purpose of verifying the number of votes counted for any office or measure in an election. California Elections Code Chapter 9, Sections 15620 through 15634 govern voter requested recounts.

## REQUESTING A RECOUNT

### Who can request

Any voter of the State may file a request. (E.C. 15620)

### Timing of Request

The request must be filed within five (5) calendar days after the completion of the official canvass. The canvass is complete when the elections official signs the Certification of the Election Results. (E.C. 15620)

**Exceptions:** *For statewide contests, the request must be filed within five (5) calendar days beginning on the 29th day after the election.*

### Format of request

- The request must be in writing. (E.C. 15620)
- Must specify the contest to be recounted. (E.C. 15620)
- Must state on behalf of which candidate, slate of electors, or position on a measure (affirmative or negative) it is filed. (E.C. 15620)
- May specify the order in which precincts shall be counted. (E.C. 15622)
- May specify the method of counting to be used (computer, manual or both). (E.C. 15627)
- May specify any other relevant material to be examined. (E.C. 15630)
- For statewide contests, may specify in which county or counties the recount is sought. (E.C. 15621)

### Place of filing

- With the county elections official responsible for conducting the election, if the contest is not voted upon statewide. (E.C. 15620)
- If election is conducted in more than one county, the request may be filed with the county elections official of, and the recount conducted within, any or all of the affected counties. (E.C. 15620)
- With the Secretary of State if the contest is voted upon statewide. (E.C. 15621)
- With the City Clerk if it is a city election (or if the city has not consolidated with the county). (E.C. 15620)

### **Notice of recount**

- A notice stating the date and place of the recount will be posted by the elections official at least one day prior to the recount and the following persons will be notified in person or by telegram. (E.C. 15628)
- All candidates for the office being recounted.
- Authorized representatives for presidential candidates, if the race for presidential delegates is to be recounted.
- Proponents of any initiative or referendum or persons filing ballot arguments for or against any initiative, referendum or measure to be recounted.
- Secretary of State if the recount is for candidates for any state or federal office, delegates to a national convention, or any state measure.

### **Process of recount**

- The recount is open to the public. (E.C. 15629)
- Recount must start no later than seven calendar days following the receipt of the request and shall be continued daily, Saturdays, Sundays, and holidays excepted, for not less than six hours each day until completed. (E.C. 15626)
- A manual recount must be conducted under the supervision of the elections official by recount boards, consisting of four voters of the county, appointed by the elections official. (E.C. 15625)

### **Result of Recount**

- The results of a recount are declared null and void unless every vote in which the contest appeared is recounted. (E.C. 15632)
- Upon completion of a recount, if a different candidate, slate of electors, or position on a measure receives a plurality of votes, the results of the official canvass will be changed and the election results re-certified. (E.C. 15632)
- A copy of the results of any recount conducted shall be posted conspicuously in the office of the elections official. (E.C. 15633)

### **Cost and payment**

- The elections official shall determine the amount of deposit necessary to cover costs of the recount for each day. (E.C. 15624)
- The voter filing the request for recount must deposit, before the recount commences and at the beginning of each day following, such sums as required by the election official to cover the cost of the recount for that day. (E.C. 15624)

If upon completion of the recount the results are reversed, the deposit shall be returned.  
(E.C. 15624)

FOR A CURRENT COST BREAKDOWN FOR MANUAL TALLY, PLEASE  
CONTACT THE ELECTION COORDINATION SECTION AT (562) 462-2626

\*Cost will include labor, facilities, material and personnel. Cost will vary according to type of election and personnel involved. Please contact the

### Automatic Manual Recount

By law, a random sample of ballots from every election must be recounted manually to verify the computer count. A minimum of all votes cast in one percent (1%) of the precincts is included in this process. *The Automatic Manual Recount is open to the public.*

(E.C. 15360)

## MOST COMMONLY ASKED QUESTIONS



### WHAT IS A PROVISIONAL BALLOT AND WHY DO THEY TAKE SO LONG TO PROCESS AFTER EACH ELECTION?

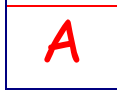


Provisional ballots are provided at the voting locations to those voters whose names are not listed on the precinct's roster. Often the voter has moved without informing the Registrar's Office. Sometimes the voter's registration was canceled in error. Often the voter is at the wrong polling place. Another case of provisional voting is when the voter has an "AV" marked in the precinct's roster designating that an absentee ballot was already issued for that voter. However, the voter claims he/she never requested or received an absentee ballot, or states that he/she did not vote the absentee ballot but does not have the absentee ballot to surrender. In these cases, a voter may vote but the ballot is inserted and sealed into a provisional envelope in order to avoid co-mingling with other voted ballots.

The voter, and the precinct inspector at the polling place complete the required information listed on the outside of the provisional envelope. After the envelope is complete, the Pollworker will enter the serial number and the line number from the Provisional Ballot List on the pink Provisional Voter Receipt and give it to the voter. The pink Provisional Voter Receipt was first used in the June 2004 Primary Election. This receipt will give the voter proper information that he/she needs to determine whether or not a provisional vote has been counted. Such "provisional ballots" are not opened or counted until the registration information is researched by the Registrar's Office and the voter is determined to be eligible to vote. This research occurs during the days immediately following election day as part of the official vote canvass. Eligible ballots are added to the count during the canvass period. The law allows 28 days to complete the official tally of the vote (Canvass). Over 100,000 provisional ballots were cast in L.A. County at high voter turnout at the October 2003 Special Recall Election.



### WHY ARE THE PHONES SO BUSY AT THE REGISTRAR'S OFFICE ON ELECTION DAY?



On Presidential Election Day, November 2000, the phone company reported that up to 10,000 calls per hour were flooding our phone system. While it is not possible to have sufficient staff to respond to such call volume, an Interactive Voice Response (IVR) system was installed and proved to double our call response capability.

The vast majority of callers ask "Where do I go to vote?" Listed below are the responses the caller will hear when calling a designated toll-free number (800) 815-2666:

- While callers are on hold awaiting connection with the IVR or a "live" operator, voice messages inform them alternate sources to obtain information on polling place look up including the back page of the voter's sample ballot booklet, our Internet website address, City Clerk's offices, County libraries and political party headquarters.
- For major elections we provide lists of polling place locations to the 88 city clerks in L.A. County, many of whom also have Internet access. Additionally, over 90 County libraries have Internet access and, along with the political parties and dozens of public and private organizations, partner with our office to assist the voting public. The cooperation of these offices and organizations has been outstanding.
- Since November 1996, poll location look-up by address has been available on our web site at: [www.lavote.net](http://www.lavote.net).





## WHY HAS MY VOTING LOCATION CHANGED?

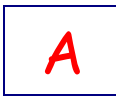


Every voter's polling place address is printed on the back cover of the sample ballot booklet he/she received in the mail prior to the election. Reasons for changes in polling place locations from previous elections include:

- In 2001, AB 280, Chapter 904 was enacted to revise the maximum number of voters in a precinct from 1,000 to 1,250 in counties with a population of 1,000,000 or more. This law had a sunset date of January 1, 2005 which meant that as of that date the law was repealed and the provisions allowing the increase to 1,250 would only be operative until that time. Effective on that same date, January 1, 2005, AB 280 also reinstated the original 1,000 maximum number of voters in a precinct. This change in law reducing the maximum number of voters in a precinct. This change in law reducing the maximum precinct size from 1,250 to 1,000 resulted in creating a requirement for an additional 430 precincts beginning with the June 2006 Primary Election.
- Precinct boundary changes are required due to increased registration or consolidation of precincts.
- Polling place locations are not permanent, and are subject to availability of the public building, church, private residence, etc. for each election.
- A polling place across the street is not necessarily in the voting precinct for all residents of an area because the precinct boundary line may be established in the middle of the street due to bisecting district lines (i.e. a water district bisecting a precinct).



## ARE THERE ANY SAFEGUARDS IN THE VOTE TALLY SYSTEM TO GUARD AGAINST FRAUD?



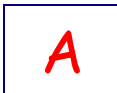
As required by law, the Department's computer tally software has been certified by the Secretary of State's Office.

- The Department is required by law to conduct computer Logic and Accuracy tests before, during, and after vote tallying on election night. Additionally, a copy of the vote count program is on file with the Secretary of State's Office.

All voted ballots from a randomly selected 1% of the 832 precincts are manually tallied and balanced against the computer counts to verify the accuracy of the election tally system during the Official Canvass period which takes place after election day, but before results are officially certified. This is also required by law.



## WHAT PROVISIONS ARE MADE FOR VOTERS WITH DISABILITIES?



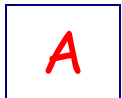
- **InkaVote Plus** An audio ballot booth is available to assist voters with special needs at every polling place on election day. Voters, who are disabled, including those who are blind or visually impaired, may vote privately and independently using an audio headset and a simple keypad. Once voting is complete, a paper ballot is printed. That ballot is then inserted into the InkaVote Plus PRB like any other ballot. Also, voters whose main language is not English may choose to vote an audio ballot in Chinese (Mandarin or Cantonese), Japanese, Korean, Spanish, Tagalog/Filipino or Vietnamese.
- **Curbside Voting** Any voter who cannot reach the voting area at the poll because of architectural barriers or physical limitations may request to vote "curbside", meaning outside of the poll location. A poll worker will bring a ballot and marking device to the voter, assist the voter if necessary, and place the voter's ballot in the ballot box.
- **Voters with Wheelchairs** Designated wheelchair accessible voting booths are available at every County poll location.



- **Permanent Absent Voting** California law permits any voter to apply for Permanent Absent Voter (PAV) status. PAV's are automatically sent an absentee ballot for each election. For further information regarding this program, please call (562) 466-1323.
- **TDD Services for the Hearing Impaired** A telecommunications device for the deaf (TDD) is available to receive calls from any citizen who has a hearing impairment. The TDD service number is (562) 462-2259.



**WHAT PROVISIONS ARE MADE FOR MULTILINGUAL VOTERS?**



In 1992 federal legislation (Public Law 102-344) passed extending the minority language provisions of the Voting Rights Act of 1965. Any County with more than 10,000 residents whose native language is not English and who indicated on their U.S. census form a lack of proficiency in English, is required to provide election materials in the identified languages. In Los Angeles County these language requirements extend to Chinese, Japanese, Korean, Spanish, Tagalog and Vietnamese. The Registrar-Recorder/County Clerk has installed a toll free number (800) 481-8683 for L.A. County residents to call to obtain voting materials in any of these six designated languages. Translated election materials are automatically mailed to voters who have requested this information in past elections. Multilingual information and oral assistance is also available at those polling places where a specific language threshold exists indicating a need for this assistance.



Also, on Election Day every polling place has the InkaVote Plus voting system which includes an audio ballot booth available to assist voters with special needs. Voters whose main language is not English may choose to vote an audio ballot in Chinese (Mandarin or Cantonese), Japanese, Korean, Spanish, Tagalog/Filipino or Vietnamese by using an audio headset and a simple keypad. Once voting is complete, a paper ballot is printed. That ballot is then inserted into the InkaVote Plus PBR like any other ballot.

In a continuous effort to reach voters whose first language is not English, our department's website has been expanded to include information on voting services for persons requiring assistance in Chinese, Japanese, Korean, Spanish, Tagalog/Filipino and Vietnamese (the languages mandated for translation in compliance with the U.S. Voting Rights Act). Viewers have translated links located on the home page into these specific languages for accessibility. When clicked, viewers will find a Multilingual Assistance Hotline which is a toll free number for voters to request translated materials (i.e., voter registration forms and sample ballot booklets) in a specific language. Hard copies of the "Multilingual Voter Services" brochure are available upon request, or can be viewed on our website [www.lavote.net](http://www.lavote.net).

## INKAVOTE PLUS



### WHAT IS INKAVOTE PLUS?



InkaVote Plus is an enhancement to the InkaVote paper ballot voting system used by Los Angeles County voters since 2003. It consists of three parts:

1. The **voting device** and the attached special ink marker. Each voter inserts the ballot into the device, securing the ballot over the red pins and then “inks” the ballot card.
2. The **precinct ballot reader (PBR)** sits on top of the ballot box. The PBR checks ballots for overvotes (making more selection for a contest than allowed) and for completely blank ballots (undervotes) and notifies the voter. This provides a second chance for the voter to correct his/her ballot.
3. An **audio ballot booth** is available to assist voters with special needs. Voters who are disabled, including those who are blind or visually impaired, may vote privately and independently using an audio headset and simple up/down arrow keypad. Also, voters whose main language is not English may choose to vote using the audio headset in Chinese (Cantonese or Mandarin), Japanese, Korean, Spanish/ Tagalog/Filipino or Vietnamese. Other voters may also prefer to vote using the audio equipment. Once the voter has made selection



### HOW DOES INKAVOTE PLUS PROTECT THE VOTE?



InkaVote Plus alerts voters to overvotes (making more selection for a contest than allowed) or completely blank ballots. This allows for a second chance to make corrections. This protects the vote by insuring each voter’s choices are reflected properly.



### HOW DOES THE PBR WORK?



The InkaVote Plus precinct ballot reader (PBR) contains sensors in the ballot slot. When the sensors read an overvoted contest or a completely blank ballot, the ballot returns with a printed notification explaining the error. Ballots without such errors simply pass through the PBR and drop into the ballot box.



### IS MY VOTE STILL PRIVATE?



Yes! The InkaVote ballot may be inserted into the PBR in any direction including upside down. The PBR returns the ballot to a voter only if he/she has overvoted a contest or cast a completely blank ballot. Is so alerted, the voter then returns to the ballot booth to make the correction.



### **CAN VOTERS WITH DISABILITIES USE INKAVOTE PLUS?**



Yes! InkaVote Plus includes an **audio ballot booth** to provide an independent and private voting experience for voters who are blind, visually impaired or otherwise disabled. Using a private audio headset, voters with visual or other disabilities indicate voting choices using a simple keypad. Once voting is complete, a paper ballot is printed. That ballot is then inserted into the InkaVote Plus PBR like any other ballot. (Note: voting with the audio ballot does take more time due to “reading” the ballot prior to making selections.)



### **HOW DOES INKAVOTE PLUS HELP VOTERS WITH LIMITED ENGLISH SKILLS ?**



The audio ballot provides service in six languages in addition to English. Voters may choose an audio ballot in any of the languages mandated by the Federal Voting Rights Act: Chinese (Cantonese or Mandarin), Korean, Japanese, Spanish, Tagalog/Filipino, or Vietnamese.

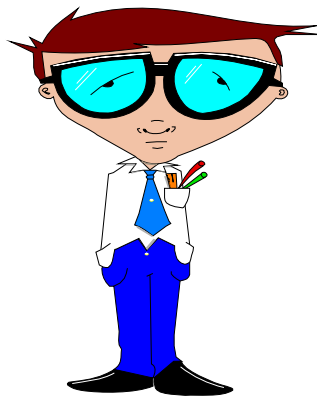
*For more information on InkaVote Plus visit [www.lavote.net](http://www.lavote.net)*

# LOS ANGELES COUNTY REGISTRAR-RECORDER/COUNTY CLERK

## COMMON QUESTIONS ABOUT VOTE BY MAIL BALLOTS, REGISTRATION AND VOTING



***VOTE BY MAIL  
BALLOTS***



***VOTING***

***REGISTRATION***

|   | QUESTIONS   | ANSWERS/AUTHORITY  |
|---|---|--|
| <b>VOTE BY MAIL BALLOTS</b>                   |   |  |
| 1.  | <p><b>WHO MAY VOTE BY MAIL?</b></p><br><p><b>ARE THERE CIRCUMSTANCES UNDER WHICH A VOTER CAN BE REQUIRED TO VOTE BY MAIL?</b></p> | <p>Any registered voter may vote by "absentee" ballot. Prior to 1978, only persons who had a certified medical excuse or who could demonstrate that they would be out of town on election day were allowed to vote by mail. Since 1978, however, any registered voter may apply for and vote a vote by mail ballot, making "voting by mail" accessible to everyone. (E.C. SEC. 3003)</p> <p>Yes, if an election precinct has fewer than 250 registered voters on the 88th day prior to an election, that precinct can be declared by the elections official to be a "mail ballot precinct" and all voters in that precinct will automatically be sent vote by mail ballots. (E.C. SEC. 3005)</p>   |
| <b>HOW TO APPLY FOR A VOTE BY MAIL BALLOT</b> |   |  |
| 2.  | <p><b>WHERE CAN I OBTAIN AN APPLICATION TO VOTE BY MAIL?</b></p>  | <p>You must apply in writing to your local elections official. The address and telephone number of your county elections official is 12400 Imperial Highway, Absent Voter Section Room 3002, Norwalk 90650, and (562) 466-1323.</p> <p>You can find the telephone number and address of your county elections official by looking in the front of your telephone directory in the white pages, government listing section, under county offices. It will be listed under either "Elections," "Registrar of Voters," "County Clerk," or "Voting."</p> <p>An application to vote by mail is also included in the sample ballot and voter information pamphlet sent to you by the county elections official prior to each election. (E.C. SEC. 3022)</p>  |
| 3.  | <p><b>WHEN MUST I APPLY FOR A VOTE BY MAIL BALLOT?</b></p>  | <p>Election officials process applications and mail out vote by mail ballots in the period 29-7 days prior to an election. You may submit an application prior to this time, but the elections official will hold it until the 29th day. Applications are available at the election official's office and can be completed and submitted in person. (E.C. SEC. 3001)</p> <p>The elections official cannot accept any applications received less than 7 days prior to an election. However, if during the final week before an election you become ill or disabled or for some unforeseen reason find that you will be away from your polling place on election day, you may request (in writing and signed under penalty of perjury) that a vote by mail ballot be picked up and delivered to you. You may authorize another person to bring you the ballot and to return it to the elections official after you have voted. (E.C. 3021)</p> |

|   | QUESTIONS  | ANSWERS/AUTHORITY  |
|---|--|--|
| 4.  | <b>WHAT INFORMATION MUST BE INCLUDED IN MY APPLICATION?</b>  | <p>Your application must include your printed name, your residence address, as it appears on the affidavit of registration, the address where you want the vote by mail ballot sent, and the name and date of the election for which you are applying for (e.g. June 3, 2008 Primary). In addition, you must sign and date your application. (E.C. SEC. 3006)</p> <p>NOTE: The application shall also contain a check box by which a voter not affiliated with a political party may request a vote by mail ballot for a specific party provided that the party has adopted the rule allowing those voters to vote that party's ballot.</p>  |
| 5.  | <b>I HAVE A MEDICAL DISABILITY. DO I HAVE TO APPLY FOR A VOTE BY MAIL BALLOT FOR EACH ELECTION?</b>  | <p>No, any voter may apply for permanent vote by mail voter status. Such voters are automatically sent an a vote by mail ballot for every election. For further information on how to become a permanent vote by mail voter, refer to your sample ballot or call the Vote By Mail Section at (562) 466-1323. (E.C. SEC. 3201)</p> <p>Once a voter becomes a permanent vote by mail voter, he or she will retain this status as long as he or she casts a ballot in all <b>statewide primary or general</b> elections. If a permanent vote by mail voter fails to cast a ballot in two consecutive general elections, he or she will be removed from the permanent vote by mail voter list and will need to reapply in order to have this status restored. (E.C. SEC. 3206)</p> |
| 6.  | <b>I WILL BE OUT OF THE COUNTRY FOR AN ELECTION AND I'M CONCERNED THAT THE MAIL IS SLOW AND I MAY NOT RECEIVE MY VOTE BY MAIL BALLOT IN TIME TO COMPLETE IT AND RETURN IT BY ELECTION DAY. IS THERE ANY WAY I CAN APPLY EARLIER THAN THE NORMAL 29 DAYS?</b> | <p>Yes. If you are in the military or temporarily living overseas you may qualify as a "special absentee voter." Special absentee ballot applications may be processed by the elections official as many as <b>60 days</b> prior to an election. Application must contain the same information cited in #4. (E.C. SEC. 3103)</p> <p>An application by a qualified special absentee voter shall be deemed an affidavit of voter registration and an application for permanent vote by mail status. (E.C. SEC. 3104)</p>   |
| <p><b>HOW TO VOTE USING A VOTE BY MAIL BALLOT</b><br/> <b>Once you have obtained your ballot by following the steps outlined above, you can vote your ballot and return it by mail or personally.</b></p> |  |  |
| 7.  | <b>I APPLIED FOR VOTE BY MAIL BALLOT. I HAVE NOT RECEIVED MY BALLOT BY RETURN MAIL AND MUST LEAVE FOR A TRIP IMMEDIATELY. IS THERE A WAY I CAN STILL VOTE WITHOUT WAITING FOR MY VOTE BY MAIL BALLOT?</b>  | <p>Yes, any voter may vote between May 28 and June 3, at the Registrar-Recorder/County Clerk's Office in Norwalk. Since you will be unable to surrender your vote by mail ballot, you will be issued a "provisional" ballot, which will not be counted until it can be determined that you did not also vote by mail.</p>  |

|     | QUESTIONS   | ANSWERS/AUTHORITY   |
|-----|---|---|
| 8.  | <p><b>HOW DO I VOTE MY BALLOT?</b></p> <p><b>MAY I APPLY AND VOTE AT THE ELECTIONS OFFICIALS' OFFICE?</b></p> | <p>Follow the instructions, which accompany your ballot provided by the elections official. Failure to complete your ballot correctly could jeopardize your vote. You will receive all the supplies necessary for the use and return of the ballot. (E.C. SEC. 3010)</p> <p>Yes, during regular business hours and on the two weekends prior to election day. Call the Vote By Mail Section at (562) 466-1323 for office hours or if you have any questions concerning your vote by mail ballot.</p>  |
| 9.  | <p><b>DO I HAVE TO SIGN THE VOTE BY MAIL BALLOT RETURN ENVELOPE?</b></p>                                      | <p>Yes. The signature is compared to the signature on your voter registration card before the ballot is counted to determine that you are the authorized voter. This is an important protection for you. To preserve the secrecy of your ballot, once the signature comparison is made, the ballot is separated from the envelope to prevent anyone from knowing how you voted. In this manner, the ballot becomes as anonymous and secret as any of the other ballots before they are counted. If, when you apply for an vote by mail ballot, you omit any of the required information from your application, the elections official will send you a ballot, but will also include a notice that the missing information must be provided in order for the ballot to be counted. (E.C. SECS. 3009, 3019)</p> |
| 10. | <p><b>WHEN MUST I RETURN THE VOTED BALLOT?</b></p>  | <p>In order to be counted, your ballot must be <u>received</u> by the elections official no later than the close of the polls on election day. The polls close in California at 8:00 p.m. You can mail it or bring it to the elections office or to any polling place worker within the county. Ballots received after close of polls cannot be counted regardless of postmarks. (E.C. SECS. 3017, 3020)</p> <p>If you return your voted ballot by mail, don't forget to put the required postage on the envelope. The post office cannot deliver it without the required postage.</p>  |
| 11. | <p><b>IF I LOSE THE VOTE BY MAIL BALLOT SENT TO ME, CAN I GET ANOTHER ONE?</b></p>                            | <p>Yes. However, you must sign a statement under penalty of perjury that you have lost or did not receive the first vote by mail ballot. The elections official maintains a record of each request, and provides a list of these requests to the polling place to ensure that each voter only casts one ballot. If you vote by mail twice, even if by mistake, neither ballot will be counted. (E.C. SECS. 3013, 3014)</p>  |
| 12. | <p><b>CAN I GIVE MY VOTED VOTE BY MAIL BALLOT TO SOMEONE ELSE TO RETURN FOR ME?</b></p>                       | <p>If you are ill, or have a physical disability, you may designate a relative (spouse, child, parent, grandparent, grandchild, brother, or sister) or any person residing in the same household as you to return your voted ballot for you following the instructions printed on the back of the return envelope. Your relative may return it in person to the elections official or to a polling place in your county, or may place it in the mail for return to the elections official. Contact your county elections official for more information. (E.C. SEC. 3017)</p>  |

|                     | QUESTIONS   | ANSWERS/AUTHORITY  |
|---------------------|---|--|
| 13.                 | <b>IF I REQUEST A VOTE BY MAIL BALLOT, CAN I CHANGE MY MIND AND STILL VOTE AT MY REGULAR POLLING PLACE?</b>                                   | <p>Yes, but you must bring your unvoted vote by mail ballot and give it to the polling place worker before voting a regular ballot. (E.C. SEC 3015)</p> <p>If you are unable to surrender your vote by mail ballot, however, you may still cast a "provisional" ballot at your polling place which will not be counted until it can be determined that you have not also voted by mail ballot. (E.C. SECS. 3016, 14310)</p>  |
| <b>REGISTRATION</b> |   |  |
| 14.                 | <b>WHAT ARE THE REQUIREMENTS TO REGISTER TO VOTE?</b>   | U.S. Citizen – Resident of California – 18 years of age at next election -- Not in prison or on parole for conviction of felony. (CA. CONST. ART. II, SEC 2, E.C. SECS. 321, 2101)   |
| 15.                 | <p><b>HOW LONG MUST A PERSON RESIDE IN CALIFORNIA TO BE ELIGIBLE TO REGISTER AND VOTE?</b></p> <p><b>NEW RESIDENTS &amp; NEW CITIZENS</b></p> | <p>A person who has a residence in California, and intends to remain a resident is eligible to vote in California elections. (E.C. SEC. 349)</p> <p>To vote in an election an Affidavit of Registration must be executed and received by the election official at least 15 days before the election. A properly executed affidavit postmarked on or before the 15th day before an election and received by mail after the 15th day will be accepted. (E.C. SEC. 2102)</p> <p>A "new resident" who established residency in California after the 15th day before an election may vote for President and Vice President by registering to vote in the election official's office between the 14th day and 7th day before the presidential election. (E.C. SECS. 332, 3400)</p> <p>Persons who become citizens after the close of registration may register and vote at the Registrar of Voters office between the 14<sup>th</sup> and 7<sup>th</sup> day before an election. New citizens must present a Certificate of Naturalization and declare they have established residency in the county. (E.C. SECS. 331, 3500, 3501)</p> |
| 16.                 | <b>THE U.S. CONSTITUTION STATES THAT AS A CITIZEN I HAVE THE RIGHT TO VOTE. (AMEND'S 15, 19, 24, 26) WHY MUST I REGISTER?</b>                 | The U.S. Constitution also delegates many powers to the States. California law requires an Affidavit of Registration unless a Superior Court has issued a judgment directing registration. (CA. CONST. ART. II, SEC. 3, E.C. SEC. 2100)  |
| 17.                 | <b>MAY I REGISTER EVEN IF MY 18TH BIRTHDAY IS THE DAY AFTER THE ELECTION?</b>   | No. Must be <u>18</u> on or before the day of the election. (E.C. Sec. 2000, County Counsel Opinion)   |



|     |   |   |
|-----|---|---|
| 18. | <p><b>DO I NEED TO PAY TO REGISTER TO VOTE?</b></p> <p><b>CAN A WORKER AT THE POLLING PLACE ASK ME TO TAKE ANY TESTS?</b></p> | <p>No fees may be charged for registration. (E.C. SEC. 2121)</p> <p>No.</p>   |
|     | <b>QUESTIONS</b>  | <b>ANSWERS/AUTHORITY</b>  |
| 19. | <b>MY HUSBAND IS OUT OF TOWN, MAY I REGISTER FOR HIM?</b>   | No. The signature of the registrant certifies the truthfulness and correctness of the affidavit, under penalty of perjury. (E.C. SECS. 2102, 2150)  |
| 20. | <b>MAY I REGISTER TO VOTE IN L.A. COUNTY WHILE I AM TEMPORARILY IN ANOTHER COUNTY?</b>  | Yes. The other county would send the registration to L.A., just as we would if the situation were reversed. (E.C. SECS. 2113, 2114)   |
| 21. | <b>WOULD LIKE TO REGISTER TO VOTE BUT I AM AN ACTOR AND DO NOT WANT MY ADDRESS MADE PUBLIC.</b>                               | Under current state law, voter registrations are a matter of public record and must be disclosed on request. Specific voter registration information is however confidential. This includes the home address, telephone number, e-mail address, precinct number, California drivers license/identification number, social security number and any other unique identifier used for purposes of identification. <b>Exception:</b> This information is available to any candidate, specific committees and to any person using this information for election, scholarly, journalistic, political or governmental purposes. (GOV'T. CODE 6250 et seq. PUBLIC RECORDS ACT, 6254.4 and E.C. SEC. 2194) |
| 22. | <b>MY MOTHER IS DISABLED. MAY I SIGN THE AFFIDAVIT OF REGISTRATION FOR HER?</b>   | If unable to write she may make a mark or cross as a signature. You, then, may sign and date the affidavit below her signature or mark. (E.C. SEC. 2150) A signature stamp may also be used by an authorized user under specified conditions. (E.C. 354.5)  |
| 23. | <b>MAY I REGISTER TO VOTE AT MY BUSINESS ADDRESS OR MAY I USE MY P.O. BOX NUMBER?</b>   | A person may only register to vote at his or her place of residence. A business address or P.O. Box number may only be used as a mailing address. (E.C. SECS. 349, 2020-2035)   |
| 24. | <b>WHEN MUST A VOTER REGISTER?</b>  | The registration of a voter is permanent unless a person requests cancellation, is legally found mentally incompetent, imprisoned or on parole for conviction of a felony, dies, moves out of the precinct and/or county, wants to change party affiliation, is unknown at the registered address or has a Residency Confirmation (RCOP) postcard returned or other notification by the Postal Service as undeliverable. A voter must reregister if the voter registration has been canceled for any of the above reasons, and the voter is presently eligible. (E.C. SECS. 2200, 2201, 2222, 2224)   |
| 25. | <b>WHEN IS IT ADVISABLE, BUT NOT MANDATORY TO REREGISTER?</b>   | If a voter has change of surname (through marriage, etc.). (E.C. SEC. 2115)<br>If a voter moves within the same election precinct. (E.C. SEC. 2204)   |

|     |  |   |
|-----|--|---|
| 26. | <b>MAY I SIGN A PETITION IF I AM NOT REGISTERED TO VOTE?</b> | If you complete and sign an Affidavit of Registration on the same date or a date prior to signing the petition, and if the elections official receives the affidavit on or before the date the petition is filed, the signature will be validated. (E.C. SEC. 2102) |
|-----|--|---|

|     | <b>QUESTIONS</b>  | <b>ANSWERS/AUTHORITY</b>   |
|-----|---|--|
| 27. | <p><b>DO I NEED TO RE-REGISTER IF I MOVED, CHANGE MY NAME OR POLITICAL PARTY?</b></p> <p><b>FAIL SAFE VOTING</b></p> <p><b>I MOVED AFTER THE May 19 REGISTRATION DEADLINE. CAN I VOTE IN THIS ELECTION?</b></p> | <p>California law requires a voter to reregister if they move out of the precinct, change their name or wish to change their political party affiliation. (E.C. SECS. 2115, 2116, 2152, 2204)</p> <p>Under Federal and State election law provisions, voters who moved 15 days or more before an election and fail to notify the elections office of the address change may vote by provisional ballot at the polling place for the <b>NEW</b> residence address or at the Registrar-Recorder/County Clerks Office in Norwalk. (E.C. SEC. 14311)</p> <p>Voters, who moved between May 19 and June 3, may vote at the polling place for either the <b>NEW or PRIOR</b> residence address or at the Registrar-Recorder/County Clerks Office in Norwalk. Voters who have moved will be asked to vote by provisional ballot. Voter registration address information will be changed for future elections. (It is recommended voters be advised to vote at polling place for new address to provide necessary change of address information to update voter file.) (E.C. SECS. 2035, 14311)</p> |

**VOTING**

|     |  |   |
|-----|--|---|
| 28. | <b>WHAT DO I DO IF MY POLLING PLACE IS NOT OPEN?</b>   | Check the address on the back of your sample ballot to make sure you have gone to the right place. Polling places often change. If you are at the right place, call the Registrar's Office at (562) 466-1373 to let them know the polling place is not open. (COUNTY REQUEST) |
| 29. | <b>IF I DON'T KNOW WHAT TO DO WHEN I GET TO MY POLLING PLACE, CAN SOMEONE THERE HELP ME?</b> | Yes, the precinct board will help you. (E.C. SECS. 14272, 14282)  |
| 30. | <b>CAN I TAKE MY SAMPLE BALLOT OR OWN WRITTEN LIST INTO THE VOTING BOOTH?</b>                | Yes. Deciding your votes before you go to the polling place will help in voting your ballot. (COUNTY RECOMMENDATION)  |
| 31. | <b>CAN I VOTE FOR SOMEONE WHOSE</b>  | Yes, if the person is a qualified write-in candidate. Only votes for  |

|     |   |  |
|-----|---|--|
|     | <b>NAME IS NOT ON THE BALLOT?</b>   | "qualified" write-in candidates will be counted. You may ask your precinct board member for a list of these candidates. You may vote for these candidates by writing their names and the office on the write-in portion of the ballot. If you don't know how to do this, ask your poll worker for help. (E.C. SECS. 15340-15342) |
| 32. | <b>I'VE LOST MY SAMPLE BALLOT AND DON'T KNOW WHERE I'M SUPPOSED TO GO VOTE.</b> | You can access the Internet at <a href="http://lavote.net">lavote.net</a> for ballot and/or polling place information. You may also call 1(800) 815-2666, (562) 466-1310, (562) 466-1323 for more information.   |

# 2008 SCHEDULED ELECTIONS

| ELECTION DATE | JURISDICTIONS   | CLOSE OF REGISTRATION |
|---------------|---|-----------------------|
| FEBRUARY 5    | PRESIDENTIAL PRIMARY<br>55 <sup>TH</sup> STATE ASSEMBLY DISTRICT SPECIAL (RUNOFF)<br>ACTON-AGUA DULCE UNIFIED SCHOOL DISTRICT SPECIAL BOND<br>DOWNEY CITY SPECIAL MUNICIPAL<br>HUNTINGTON PALRK CITY SPECIAL<br>INGLEWOOD CITY SPECIAL MUNICIPAL<br>LOGN BEACH COMMUNITY COLLEGE DISTRICT SPECIAL BOND<br>LOS ANGELES CITY SPECIAL MUNICIPAL<br>PASADENA CITY SPECIAL MUNICIPAL<br>REDONDO BEACH UNIFIED SCHOOL DISTRICT SPECIAL BOND<br>SAN GABRIEL UNIFIED SCHOOL DISTRICT SPECIAL BOND<br>SANTA MONICA-MALIBU UNIFIED SCHOOL DISTRICT SPECIAL BOND | JANUARY 22            |
| APRIL 8       | GENERAL LAW & CHARTER CITIES<br>ARCADIA CITY<br>AVALON CITY<br>BRADBURY CITY<br>CULVER CITY<br>EL SEGUNDO CITY<br>LANCASTER CITY<br>LAWNSDALE CITY<br>LONG BEACH CITY PRIMARY NOMINATING, LONG BEACH UNIFIED SCHOOL & LONG BEACH COMMUNITY COLLEGE DISTRICTS <b>TRUSTEE AREAS 2 and 4</b><br>MALIBU CITY<br>SANTA CLARITA CITY<br>SIERRA MADRE CITY<br>VERNON CITY<br>WALNUT CITY<br>WHITTIER CITY  | MARCH 24              |
| JUNE 3        | PRIMARY ELECTION<br>LONG BEACH CITY (RUNOFF)<br>TORRANCE CITY   | MAY 19                |

NOVEMBER 4 GENERAL ELECTION  
CONSOLIDATED DISTRICT ELECTIONS

OCTOBER 20

**SCHOOL DISTRICTS**

CHAFFEY JOINT UNION HIGH (shared w/San Bernardino County)  
FULLERTON JOINT UNION HIGH (shared w/Orange County)  
LOWELL JOINT SCHOOL (shared w/Orange County)  
NORTH ORANGE COUNTY COMMUNITY COLLEGE (shared w/Orange County)  
SNOWLINE JOINT UNIFIED SCHOOL (shared w/San Brnardino County)

NOVEMBER 6 **MUNICIPAL WATER DISTRICTS**

OCTOBER 22

CENTRAL BASIN  
FOOTHILL  
HUNTINGTON  
LAS VIRGENES  
SAN GABRIEL VALLEY  
THREE VALLEYS  
PICO WATER  
UPPER SAN GABRIEL VALLEY  
WEST BASIN

HEALTH CARE DISTRICTS  
ANTELOPE VALLEY  
BEACH CITIES

RECREATION AND PARK DISTRICT  
WESTFIELD

WATER AGENCIES  
ANTELOPE VALLEY-EAST KERN  
CASTAIC LAKE

WATER REPLENISHMENT DISTRICT  
DISTRICTS 2 AND 5

**GENERAL AND MUNICIPAL ELECTIONS**

DOWNEY CITY  
POMONA CITY  
LONG BEACH CITY PRIMARY NOMINATING, LONG BEACH UNIFIED SCHOOL & LONG BEACH COMMUNITY COLLEGE DISTRICTS



LOS ANGELES COUNTY  
**BOARD OF SUPERVISORS**

**Yvonne B. Burke**  
Chairperson, Second District

**Gloria Molina**  
First District

**Zev Yaroslavsky**  
Third District

**Don Knabe**  
Fourth District

**Michael D. Antonovich**  
Fifth District

---

**Dean C. Logan**  
Acting Registrar-Recorder/County Clerk